

For Research Use Only

Mouse IgG1 Isotype Control (MOPC-21)

Catalog Number: 65124-1-Ig



Basic Information

Catalog Number:

65124-1-Ig

Concentration:

500ug, 0.5 mg/ml

Source:

Mouse

Isotype:

IgG1, kappa

GenBank Accession Number:

GeneID (NCBI):

16017

UNIPROT ID:

P01868

Full Name:

immunoglobulin heavy constant
gamma 1 (G1m marker)

Purification Method:

Affinity purification

CloneNo.:

MOPC-21

Recommended Dilutions:

FC: 0.2 ug per 10⁶ cells in 100 μ l
suspension

Applications

Tested Applications:

FC

Species Specificity:

n/a

Positive Controls:

FC : ,

Background Information

The MOPC-21 immunoglobulin is useful as an isotype-matched control. The MOPC-21 immunoglobulin has an unknown binding specificity and is used as an isotype control for mouse IgG1 antibodies. This antibody has been quality-tested for flow cytometry as negative control.

Storage

Storage:

Store at 2-8°C. Stable for one year after shipment.

Storage Buffer:

PBS with 0.09% sodium azide, pH7.3

For technical support and original validation data for this product please contact:

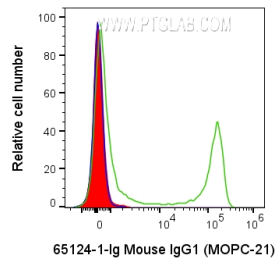
T: 4006900926

E: Proteintech-CN@ptglab.com

W: ptgcn.com

This product is exclusively available under Proteintech Group brand and is not available to purchase from any other manufacturer.

Selected Validation Data



1×10^6 human PBMCs were surface stained with 0.2 μ g Anti-Mouse IgG1 Isotype Control (65124-1-Ig, Clone:MOPC-21) (red) or 0.2 μ g Anti-Human CD8a (65113-1-Ig, Clone:Hit8a) (green) and CoraLite®647-conjugated AffiniPure F(ab')₂ Fragment Goat Anti-Mouse IgG (H+L) (SA00014-8) at dilution 1:1000 or unstained (blue). Cells were not fixed. Lymphocytes were gated.