

For Research Use Only

MDM2/HDM2 Polyclonal antibody

Catalog Number: 27883-1-AP

Featured Product

38 Publications



Basic Information

Catalog Number:

27883-1-AP

Source:

Rabbit

Isotype:

IgG

Immunogen Catalog Number:

AG27255

GenBank Accession Number:

NM_001145337.2

GeneID (NCBI):

4193

UNIPROT ID:

Q00987

Full Name:

Mdm2 p53 binding protein homolog (mouse)

Calculated MW:

55 kDa

Observed MW:

75-85 kDa, 57-60 kDa, 40-55 kDa

Purification Method:

Antigen affinity purification

Recommended Dilutions:

WB: 1:500-1:3000

IF/ICC: 1:200-1:800

FC (Intra): 0.40 ug per 10⁶ cells in a 100 µl suspension

Applications

Tested Applications:

WB, IF/ICC, FC (Intra), ELISA

Cited Applications:

WB, IHC, IF, IP, CoIP

Species Specificity:

human

Cited Species:

human, mouse, rat

Positive Controls:

WB : MCF-7 cells, A431 cells, A549 cells, HepG2 cells, T-47D cells

IF/ICC : MG132 treated U2OS cells,

FC (Intra) : HeLa cells,

Background Information

MDM2, also known as HDM2, is a protein of the E3 ubiquitin-ligase family. MDM2 is recognized as a proto-oncogene and is over-expressed in a wide range of human malignancies including soft tissue carcinomas and breast cancer. MDM2 can bind to the p53 tumor suppressor protein with high affinity, and negatively regulates p53 by mediating its ubiquitination and proteosomal degradation (PMID: 17000718). MDM2 has some isoforms with calculated molecular mass of 25-55kD, but always can be detected as 90-97kD. In addition to full length MDM2, two lower bands (85kD and 75kD) are often observed which are likely to be produced by translation initiation at methionine codons 50 and 60. Another isoform of MDM2 is often observed as 57-60kD in cell lines which is indeed a caspase cleavage product of MDM2 at residue 361 (PMID: 19565011, 9840926, 7689721).

Notable Publications

Author	Pubmed ID	Journal	Application
Mingzhe Zheng	36434180	Oncogene	WB, IHC, IF
Hidemichi Kouzu	35316214	J Clin Invest	WB
Lei Shi	35072515	Mol Cell Biol	WB

Storage

Storage:

Store at -20°C. Stable for one year after shipment.

Storage Buffer:

PBS with 0.02% sodium azide and 50% glycerol, pH7.3

Aliquoting is unnecessary for -20°C storage

For technical support and original validation data for this product please contact:

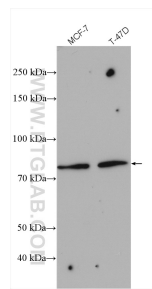
T: 4006900926

E: Proteintech-CN@ptglab.com

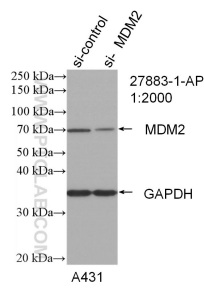
W: ptgcn.com

This product is exclusively available under Proteintech Group brand and is not available to purchase from any other manufacturer.

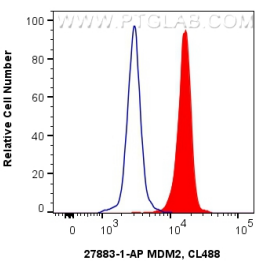
Selected Validation Data



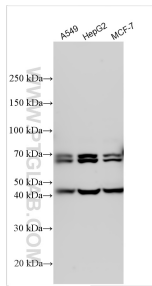
Various lysates were subjected to SDS PAGE followed by western blot with 27883-1-AP (MDM2/HDM2 antibody) at dilution of 1:2000 incubated at room temperature for 1.5 hours.



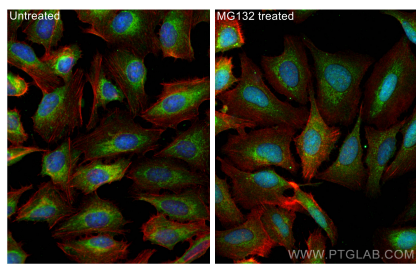
WB result of MDM2/HDM2 antibody (27883-1-AP; 1:2000; incubated at room temperature for 1.5 hours) with sh-Control and sh-MDM2/HDM2 transfected A431 cells.



1X10⁶ HeLa cells were intracellularly stained with 0.4 ug Anti-Human MDM2/HDM2 (27883-1-AP) and CoraLite®488-Conjugated AffiniPure Goat Anti-Rabbit IgG(H+L) at dilution 1:1000 (red), or 0.4 ug rabbit IgG isotype control (blue). Cells were fixed and permeabilized with True-Nuclear Transcription Factor Buffer Set.



Various lysates were subjected to SDS PAGE followed by western blot with 27883-1-AP (MDM2/HDM2 antibody) at dilution of 1:3000 incubated at room temperature for 1.5 hours.



Immunofluorescent analysis of (-20°C Ethanol) fixed MG132 treated U2OS cells using MDM2/HDM2 antibody (27883-1-AP) at dilution of 1:400 and CoraLite®488-Conjugated AffiniPure Goat Anti-Rabbit IgG(H+L) (SA00013-2), CL594-Phalloidin (red).