

For Research Use Only

ATPAF1 Polyclonal antibody

Catalog Number: 15797-1-AP



Basic Information

Catalog Number:

15797-1-AP

Size:

133 ug/ml

Source:

Rabbit

Isotype:

IgG

Immunogen Catalog Number:

AG8506

GenBank Accession Number:

BC008498

GeneID (NCBI):

64756

UNIPROT ID:

Q5TC12

Full Name:

ATP synthase mitochondrial F1 complex assembly factor 1

Calculated MW:

328 aa, 36 kDa

Observed MW:

33-35 kDa

Purification Method:

Antigen affinity purification

Recommended Dilutions:

WB 1:500-1:1000

IHC 1:50-1:500

Applications

Tested Applications:

WB, IHC, ELISA

Species Specificity:

human, mouse, rat

Note-IHC: suggested antigen retrieval with TE buffer pH 9.0; (*) Alternatively, antigen retrieval may be performed with citrate buffer pH 6.0

Positive Controls:

WB : L02 cells,

IHC : human ovary cancer tissue, human stomach cancer tissue

Background Information

Storage

Storage:

Store at -20°C. Stable for one year after shipment.

Storage Buffer:

PBS with 0.02% sodium azide and 50% glycerol pH 7.3.

Aliquoting is unnecessary for -20°C storage

For technical support and original validation data for this product please contact:

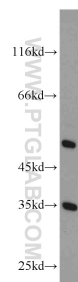
T: 4006900926

E: Proteintech-CN@ptglab.com

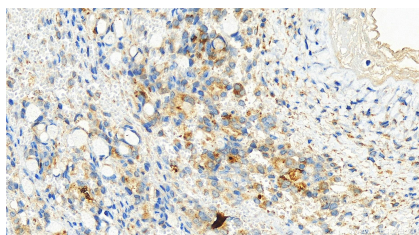
W: ptgcn.com

This product is exclusively available under Proteintech Group brand and is not available to purchase from any other manufacturer.

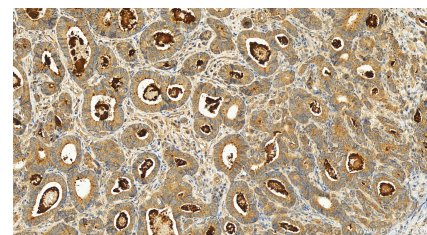
Selected Validation Data



L02 cells were subjected to SDS PAGE followed by western blot with 15797-1-AP (ATPAF1 antibody) at dilution of 1:1500 incubated at room temperature for 1.5 hours.



Immunohistochemical analysis of paraffin-embedded human ovary cancer tissue slide using 15797-1-AP (ATPAF1 antibody) at dilution of 1:200 (under 20x lens). Heat mediated antigen retrieval with Tris-EDTA buffer (pH 9.0).



Immunohistochemical analysis of paraffin-embedded human stomach cancer tissue slide using 15797-1-AP (ATPAF1 antibody) at dilution of 1:100 (under 20x lens). Heat mediated antigen retrieval with Tris-EDTA buffer (pH 9.0).