

For Research Use Only

CRAT Polyclonal antibody

Catalog Number: 15170-1-AP

Featured Product

15 Publications



Basic Information

Catalog Number:

15170-1-AP

Concentration:

350 ug/ml

Source:

Rabbit

Isotype:

IgG

Immunogen Catalog Number:

AG7422

GenBank Accession Number:

BC000723

GeneID (NCBI):

1384

UNIPROT ID:

P43155

Full Name:

carnitine acetyltransferase

Calculated MW:

71 kDa

Observed MW:

62-68 kDa

Purification Method:

Antigen affinity purification

Recommended Dilutions:

WB: 1:800-1:8000

IP: 0.5-4.0 ug for 1.0-3.0 mg of total protein lysate

IHC: 1:250-1:1000

Applications

Tested Applications:

WB, IHC, IP, ELISA

Cited Applications:

WB

Species Specificity:

human, mouse, rat

Cited Species:

human, mouse, rat, sheep, goat

Note-IHC: suggested antigen retrieval with TE buffer pH 9.0; (*) Alternatively, antigen retrieval may be performed with citrate buffer pH 6.0

Positive Controls:

WB : mouse skeletal muscle tissue, mouse heart tissue, rat skeletal muscle, rat heart tissue

IP : mouse skeletal muscle tissue,

IHC : mouse brain tissue, mouse liver tissue

Background Information

CRAT, also named as CAT1, belongs to the carnitine/choline acetyltransferase family. It is specific for short chain fatty acids. CRAT seems to affect the flux through the pyruvate dehydrogenase complex. It may be involved as well in the transport of acetyl-CoA into mitochondria. Carnitine palmitoyltransferase (CPT) deficiencies are common disorders of mitochondrial fatty acid oxidation. The CPT system is made up of two separate proteins located in the outer (CPT1) and inner (CPT2) mitochondrial membranes. CRAT is an active forms for carnitine acetyltransferase. This antibody can bind the close sequences genes.

Notable Publications

Author	Pubmed ID	Journal	Application
Joongyu D Song	33035493	Cell Metab	WB
Xutong Sun	32554303	Redox Biol	WB
Guoyu Yu	29535221	Cancer Res	

Storage

Storage:

Store at -20°C. Stable for one year after shipment.

Storage Buffer:

PBS with 0.02% sodium azide and 50% glycerol, pH7.3

Aliquoting is unnecessary for -20°C storage

For technical support and original validation data for this product please contact:

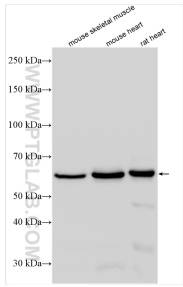
T: 4006900926

E: Proteintech-CN@ptglab.com

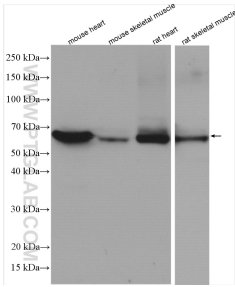
W: ptgcn.com

This product is exclusively available under Proteintech Group brand and is not available to purchase from any other manufacturer.

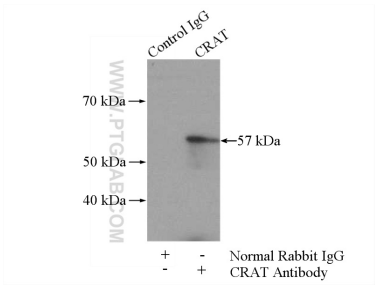
Selected Validation Data



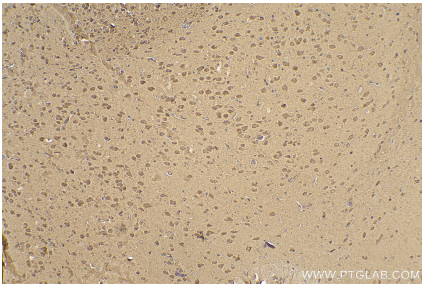
Various lysates were subjected to SDS PAGE followed by western blot with 15170-1-AP (CRAT antibody) at dilution of 1:8000 incubated at room temperature for 1.5 hours.



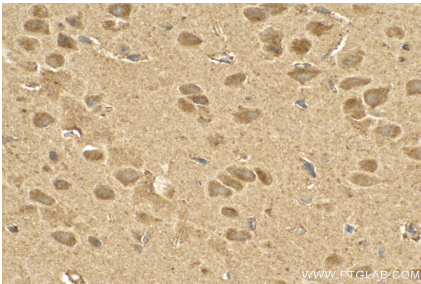
Various lysates were subjected to SDS PAGE followed by western blot with 15170-1-AP (CRAT antibody) at dilution of 1:800 incubated at room temperature for 1.5 hours.



IP result of anti-CRAT (IP:15170-1-AP, 4ug; Detection:15170-1-AP 1:300) with mouse skeletal muscle tissue lysate 3600ug.



Immunohistochemical analysis of paraffin-embedded mouse brain tissue slide using 15170-1-AP (CRAT antibody) at dilution of 1:500 (under 10x lens). Heat mediated antigen retrieval with Tris-EDTA buffer (pH 9.0).



Immunohistochemical analysis of paraffin-embedded mouse brain tissue slide using 15170-1-AP (CRAT antibody) at dilution of 1:500 (under 40x lens). Heat mediated antigen retrieval with Tris-EDTA buffer (pH 9.0).