

For Research Use Only.
Not For Use In Diagnostics.

Multi-rAb CoraLite® Plus 647-Goat Anti-Rabbit Recombinant Secondary Antibody (H+L)



Catalog Number: **RGAR005**

Information

Catalog Number:	RGAR005	Reactivity:	Rabbit
Host:	Goat	Physical State:	Liquid
Applications:	IF, FC	Conjugation:	CoraLite® Plus 647

Recommended Dilutions

1:200-1:1000 for IF and FC

Fluorophore

CoraLite® Plus 647, Amax=654 nm, Emax=674 nm

Safety Notes

This product is for research use only, not for diagnostic or therapeutic use.

Storage

Storage:
Store at -20°C. Stable for one year after shipment.
Storage Buffer:
PBS with 50% glycerol, 10 mg/mL BSA, 0.1% Proclin-300, pH 7.4.
Aliquoting is unnecessary for -20°C storage

Purity

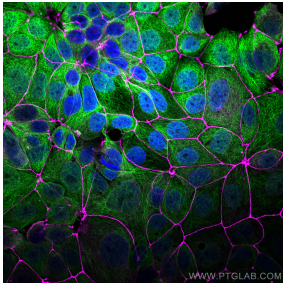
The antibody was purified from culture media supernatant by immunoaffinity chromatography using Protein G beads.

For technical support and original validation data for this product please contact:

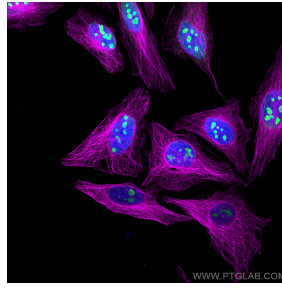
T: 4006900926 E: Proteintech-CN@ptglab.com W: ptgcn.com

This product is exclusively available under Proteintech Group brand and is not available to purchase from any other manufacturer.

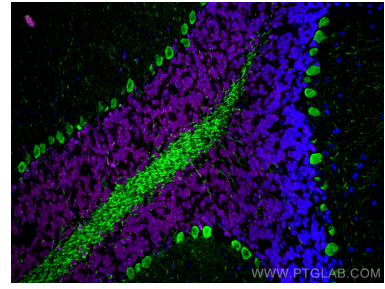
Selected Validation Data



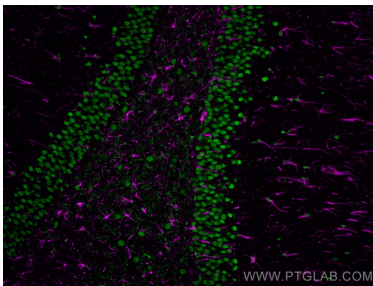
Immunofluorescence of MCF-7 cells: MCF-7 cells were fixed with 4% PFA and stained with Rabbit anti-ZO 1 polyclonal antibody (21773-1-AP, 1:2000, magenta) and mouse anti-Alpha Tubulin monoclonal antibody (66031-1-Ig, 1:1000, green). Multi-rAb CoraLite® Plus 647-Goat Anti-Rabbit Recombinant Secondary Antibody (H+L) (RGAR005, 1:500) and Multi-rAb CoraLite® Plus 488-Goat Anti-Mouse Recombinant Secondary Antibody (H+L) (RGAM002, 1:500) were used for detection.



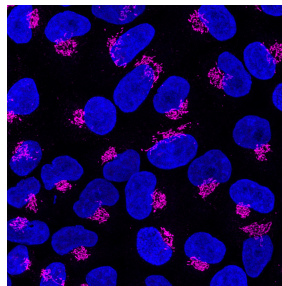
Immunofluorescence of HeLa cells: HeLa cells were fixed with 4% PFA and stained with Rabbit anti-Alpha Tubulin polyclonal antibody (11224-1-AP, 1:200, magenta) and mouse anti-NPM1 monoclonal antibody (60096-1-Ig, 1:1000, green). Multi-rAb CoraLite® Plus 647-Goat Anti-Rabbit Recombinant Secondary Antibody (H+L) (RGAR005, 1:500) and Multi-rAb CoraLite® Plus 488-Goat Anti-Mouse Recombinant Secondary Antibody (H+L) (RGAM002, 1:500) were used for detection.



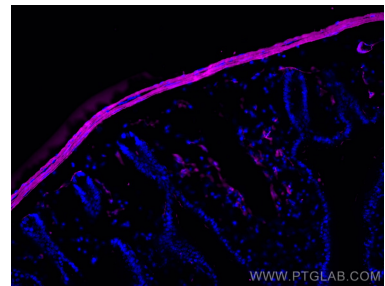
Immunofluorescence of mouse cerebellum: mouse cerebellum FFPE section was stained with Rabbit anti-NeuN polyclonal antibody (26975-1-AP, 1:200, magenta) and mouse anti-Calbindin-D28k monoclonal antibody (66394-1-Ig, 1:200, green). Multi-rAb CoraLite® Plus 647 conjugated Recombinant Goat anti-rabbit secondary antibody (RGAR005, 1:500) and Multi-rAb CoraLite® Plus 488 conjugated Goat Anti-Mouse Recombinant Secondary Antibody (H+L) were used for detection (RGAM002, 1:500) .



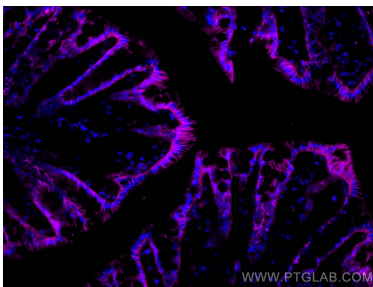
Immunofluorescence of rat brain: rat brain FFPE section was stained with Rabbit anti-GFAP polyclonal antibody (16825-1-AP, 1:200, magenta) and mouse anti-NeuN monoclonal antibody (66836-1-Ig, green). Multi-rAb CoraLite® Plus 647 conjugated Recombinant Goat anti-rabbit secondary antibody (RGAR005, 1:500) and Multi-rAb CoraLite® Plus 488 conjugated Goat Anti-Mouse Recombinant Secondary Antibody (H+L) were used for detection (RGAM002, 1:500) .



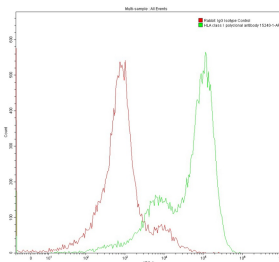
Immunofluorescence of HeLa cells: HeLa cells were fixed with 4% PFA and stained with Rabbit anti-GM130 polyclonal antibody (11308-1-AP, 1:200) Multi-rAb CoraLite® Plus 647 conjugated Goat Anti-Rabbit Recombinant Secondary Antibody (H+L) (RGAR005, 1:800) was used for detection. Nucleus was stained with DAPI (blue). The experiment was performed in Chromotek's lab and image was recorded at the Core Facility Bioimaging at the Biomedical Center, LMU Munich.



Immunofluorescent analysis of (4% PFA) fixed OCT-embedded frozen mouse small intestine tissue using smooth muscle actin antibody (14395-1-AP) at dilution of 1:400 and Multi-rAb CoraLite® Plus 647-Goat Anti-Rabbit Recombinant Secondary Antibody (H+L) (RGAR005).



Immunofluorescent analysis of (4% PFA) fixed OCT-embedded frozen mouse colon tissue using E-cadherin antibody (20874-1-AP) at dilution of 1:400 and Multi-rAb CoraLite® Plus 647-Goat Anti-Rabbit Recombinant Secondary Antibody (H+L) (RGAR005).



1×10^6 MOLT4 were surface stained with 0.2 μ g Anti-HLA class I rabbit polyclonal antibody (15240-1-AP) and Rabbit IgG Isotype Control 30000-0-AP. Multi-rAb CoraLite® Plus 647-Goat Anti-Rabbit Recombinant Secondary Antibody (H+L) RGAR005 was used at 1:500 for detection.