

IHC*easy* DMAP1 Ready-To-Use IHC Kit

Catalog Number: **KHC1953**

General Information

Sample type:
FFPE tissue

Cited sample type:

Reactivity:
Human, Mouse, Rat

Cited Reactivity:

Assay type:
Immunohistochemistry

Primary antibody type:
Rabbit Polyclonal

Secondary antibody type:
Polymer-HRP-Goat anti-Rabbit

Kit Component

Component	Size	Concentration
Antigen Retrieval Buffer	100 mL	50×
Washing Buffer	100 mL ×2	20×
Blocking Buffer	5 mL	RTU
Primary Antibody	5 mL	RTU
Secondary Antibody	5 mL	RTU
Chromogen Component A	0.2 mL	RTU
Chromogen Component B	4 mL	RTU
Signal Enhancer	5 mL	RTU
Counter Staining Reagent	5 mL	RTU
Mounting Media	5 mL	RTU
Control Slide	1 slide (Optional)	FFPE
Datasheet	1 Copy	
Manual	1 Copy	

Storage Instructions

All the reagents are stored at 2-8°C. The kit is stable for 6 months from the date of receipt.

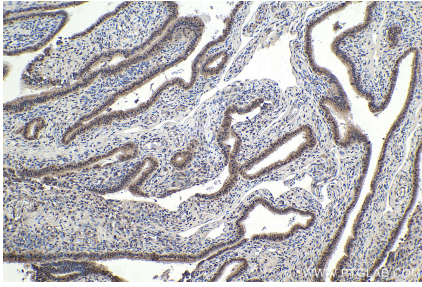
Background

DMAP1 (DNA methyltransferase 1-associated protein 1) a component of the NuA4 histone acetyltransferase complex, was originally identified as an interacting molecule with DNA methyltransferase 1 (DNMT1) which co-localizes with PCNA at DNA replication foci. DMAP1 is required for DNA repair and acts against genomic instability. DMAP1 is widely implicated in transcription repression and activation via its interaction with multiple targets including histone deacetylase2 (HDAC2).

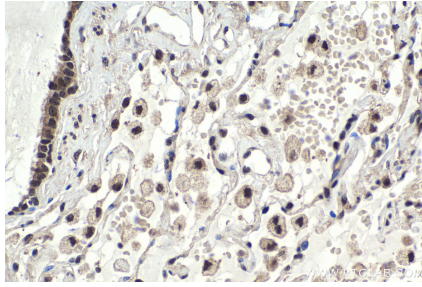
Synonyms

DMAP1, DNMAP1, DNMT1 associated protein 1, DNMTAP1, EAF2, KIAA1425, SWC4

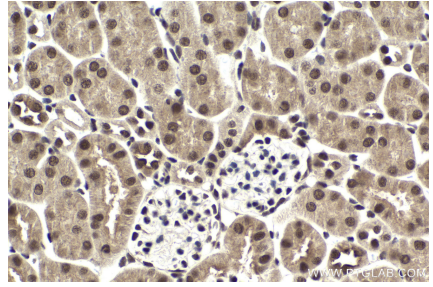
Selected Validation Data



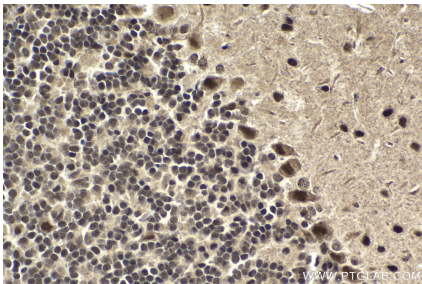
Immunohistochemical analysis of paraffin-embedded human ovary tumor tissue slide using KHC1953 (DMP1 IHC Kit).



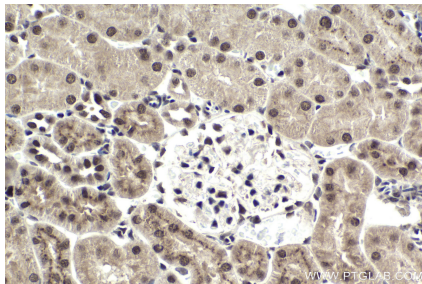
Immunohistochemical analysis of paraffin-embedded human lung cancer tissue slide using KHC1953 (DMP1 IHC Kit).



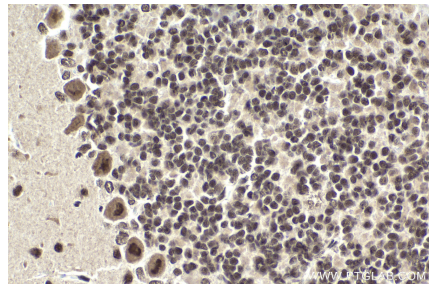
Immunohistochemical analysis of paraffin-embedded mouse kidney tissue slide using KHC1953 (DMP1 IHC Kit).



Immunohistochemical analysis of paraffin-embedded mouse cerebellum tissue slide using KHC1953 (DMP1 IHC Kit).



Immunohistochemical analysis of paraffin-embedded rat kidney tissue slide using KHC1953 (DMP1 IHC Kit).



Immunohistochemical analysis of paraffin-embedded rat cerebellum tissue slide using KHC1953 (DMP1 IHC Kit).