

# IHC*easy* CREB3L1 Ready-To-Use IHC Kit

Catalog Number: **KHC1868**

## General Information

Sample type:  
FFPE tissue  
Cited sample type:  
Reactivity:  
Human, Mouse  
Cited Reactivity:

Assay type:  
Immunohistochemistry  
Primary antibody type:  
Rabbit Polyclonal  
Secondary antibody type:  
Polymer-HRP-Goat anti-Rabbit

## Kit Component

Component	Size	Concentration
Antigen Retrieval Buffer	100 mL	50×
Washing Buffer	100 mL ×2	20×
Blocking Buffer	5 mL	RTU
Primary Antibody	5 mL	RTU
Secondary Antibody	5 mL	RTU
Chromogen Component A	0.2 mL	RTU
Chromogen Component B	4 mL	RTU
Signal Enhancer	5 mL	RTU
Counter Staining Reagent	5 mL	RTU
Mounting Media	5 mL	RTU
Control Slide	1 slide (Optional)	FFPE
Datasheet	1 Copy	
Manual	1 Copy	

## Storage Instructions

All the reagents are stored at 2-8°C. The kit is stable for 6 months from the date of receipt.

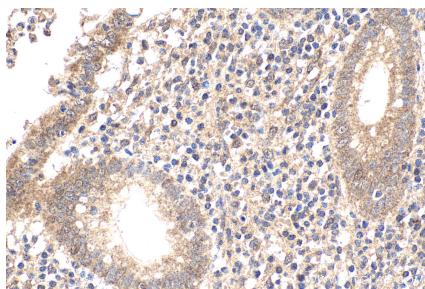
## Background

Cyclic AMP-responsive element-binding protein 3-like protein 1 (CREB3L1) belongs to a family of transcription factors that are synthesized as membrane-bound precursors in the endoplasmic reticulum (ER) and then transported to the Golgi where they are activated through regulated intramembrane proteolysis (RIP). Also it participates in ER-stress response in astrocytes in the central nervous system. It may have a role in gliosis, and involves in activation of transcription through box-B element but not CRE. CREB3L1 acts as a transcription repressor in proliferation of virus-infected cell.

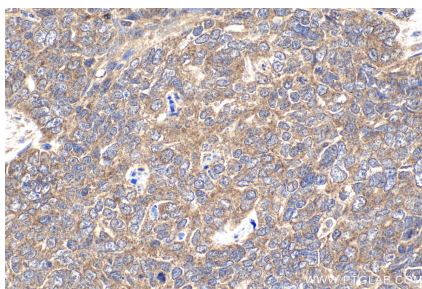
## Synonyms

CREB3L1, CREB3L1,OASIS, OASIS

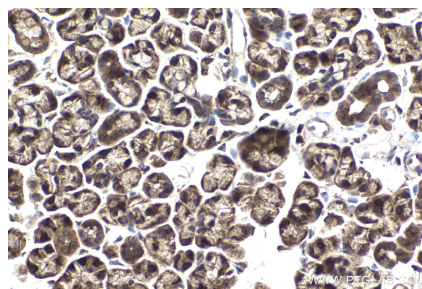
## Selected Validation Data



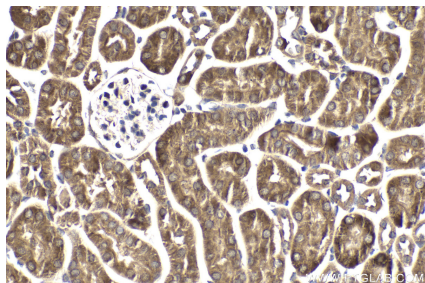
Immunohistochemical analysis of paraffin-embedded human appendicitis tissue slide using KHC1868 (CREB3L1 IHC Kit).



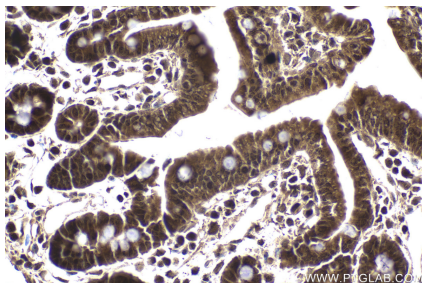
Immunohistochemical analysis of paraffin-embedded human ovary tumor tissue slide using KHC1868 (CREB3L1 IHC Kit).



Immunohistochemical analysis of paraffin-embedded mouse salivary gland tissue slide using KHC1868 (CREB3L1 IHC Kit).



Immunohistochemical analysis of paraffin-embedded mouse kidney tissue slide using KHC1868 (CREB3L1 IHC Kit).



Immunohistochemical analysis of paraffin-embedded mouse small intestine tissue slide using KHC1868 (CREB3L1 IHC Kit).