

IHC*easy* CPSF7 Ready-To-Use IHC Kit

Catalog Number: **KHC1833**

General Information

Sample type:
FFPE tissue

Cited sample type:

Reactivity:
Human, Mouse, Rat

Cited Reactivity:

Assay type:
Immunohistochemistry

Primary antibody type:
Rabbit Polyclonal

Secondary antibody type:
Polymer-HRP-Goat anti-Rabbit

Kit Component

Component	Size	Concentration
Antigen Retrieval Buffer	100 mL	50×
Washing Buffer	100 mL ×2	20×
Blocking Buffer	5 mL	RTU
Primary Antibody	5 mL	RTU
Secondary Antibody	5 mL	RTU
Chromogen Component A	0.2 mL	RTU
Chromogen Component B	4 mL	RTU
Signal Enhancer	5 mL	RTU
Counter Staining Reagent	5 mL	RTU
Mounting Media	5 mL	RTU
Control Slide	1 slide (Optional)	FFPE
Datasheet	1 Copy	
Manual	1 Copy	

Storage Instructions

All the reagents are stored at 2-8°C. The kit is stable for 6 months from the date of receipt.

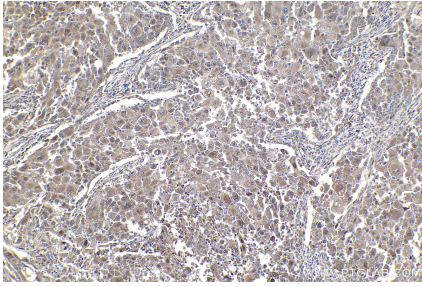
Background

CPSF7, also named as CPSF59, belongs to the RRM CPSF6/7 family. It probable component of the cleavage factor Im complex (CFIm) that plays a key role in pre-mRNA 3' processing. CPSF7 binds to cleavage and polyadenylation RNA substrates. Primary antibody in this kit is specific to CPSF7.

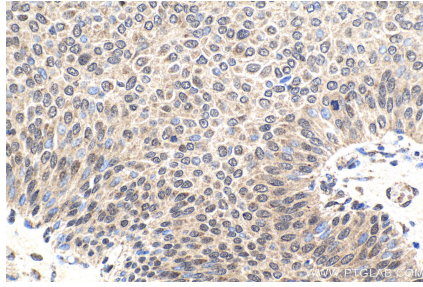
Synonyms

CPSF 59 kDa subunit, CPSF7, FLJ12529

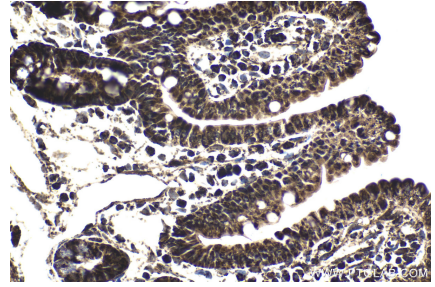
Selected Validation Data



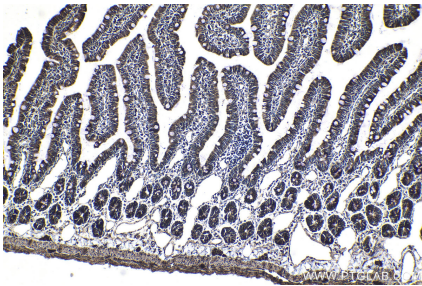
Immunohistochemical analysis of paraffin-embedded human lung cancer tissue slide using KHC1833 (CPSF7 IHC Kit).



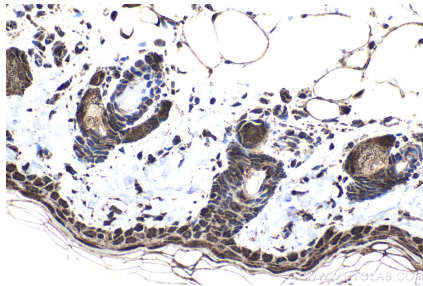
Immunohistochemical analysis of paraffin-embedded human urothelial carcinoma tissue slide using KHC1833 (CPSF7 IHC Kit).



Immunohistochemical analysis of paraffin-embedded mouse small intestine tissue slide using KHC1833 (CPSF7 IHC Kit).



Immunohistochemical analysis of paraffin-embedded rat small intestine tissue slide using KHC1833 (CPSF7 IHC Kit).



Immunohistochemical analysis of paraffin-embedded rat skin tissue slide using KHC1833 (CPSF7 IHC Kit).