

IHC*easy* COMMD1 Ready-To-Use IHC Kit

Catalog Number: **KHC1832**

General Information

Sample type:
FFPE tissue

Cited sample type:

Reactivity:
Human, Mouse

Cited Reactivity:

Assay type:
Immunohistochemistry

Primary antibody type:
Rabbit Polyclonal

Secondary antibody type:
Polymer-HRP-Goat anti-Rabbit

Kit Component

Component	Size	Concentration
Antigen Retrieval Buffer	100 mL	50×
Washing Buffer	100 mL ×2	20×
Blocking Buffer	5 mL	RTU
Primary Antibody	5 mL	RTU
Secondary Antibody	5 mL	RTU
Chromogen Component A	0.2 mL	RTU
Chromogen Component B	4 mL	RTU
Signal Enhancer	5 mL	RTU
Counter Staining Reagent	5 mL	RTU
Mounting Media	5 mL	RTU
Control Slide	1 slide (Optional)	FFPE
Datasheet	1 Copy	
Manual	1 Copy	

Storage Instructions

All the reagents are stored at 2-8°C. The kit is stable for 6 months from the date of receipt.

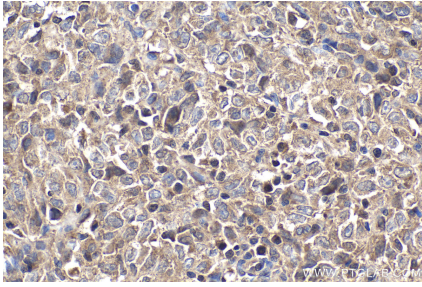
Background

COMMD1 (COMM domain-containing protein 1), also named MURR1, is implicated in copper homeostasis by binding one copper ion per monomer. COMMD1 was reported to accelerate the ubiquitination and degradation of NF-kappa-B subunits, its deficiency exerts enhanced NF-kappa-B mediated cellular response. Ubiquitinated by XIAP (X-linked inhibitor of apoptosis), COMMD1 undergoes proteasomal degradation. SOD1 activity can be downregulated by COMMD1.

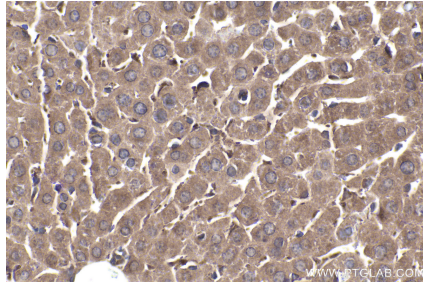
Synonyms

C2orf5, COMMD1, MURR1, Protein Murr1

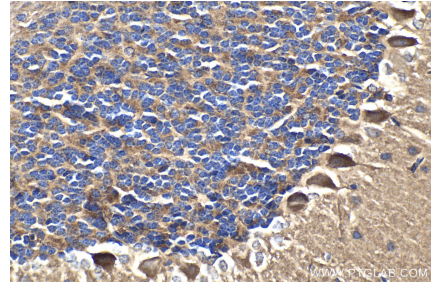
Selected Validation Data



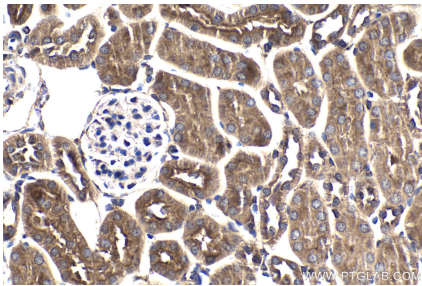
Immunohistochemical analysis of paraffin-embedded human malignant melanoma tissue slide using KHC1832 (COMMD1 IHC Kit).



Immunohistochemical analysis of paraffin-embedded mouse liver tissue slide using KHC1832 (COMMD1 IHC Kit).



Immunohistochemical analysis of paraffin-embedded mouse cerebellum tissue slide using KHC1832 (COMMD1 IHC Kit).



Immunohistochemical analysis of paraffin-embedded mouse kidney tissue slide using KHC1832 (COMMD1 IHC Kit).