

# IHC*easy* ETV5 Ready-To-Use IHC Kit

Catalog Number: **KHC1606**

## General Information

Sample type:  
FFPE tissue  
Cited sample type:  
Reactivity:  
Human, Mouse  
Cited Reactivity:

Assay type:  
Immunohistochemistry  
Primary antibody type:  
Rabbit Polyclonal  
Secondary antibody type:  
Polymer-HRP-Goat anti-Rabbit

## Kit Component

Component	Size	Concentration
Antigen Retrieval Buffer	100 mL	50×
Washing Buffer	100 mL ×2	20×
Blocking Buffer	5 mL	RTU
Primary Antibody	5 mL	RTU
Secondary Antibody	5 mL	RTU
Chromogen Component A	0.2 mL	RTU
Chromogen Component B	4 mL	RTU
Signal Enhancer	5 mL	RTU
Counter Staining Reagent	5 mL	RTU
Mounting Media	5 mL	RTU
Control Slide	1 slide (Optional)	FFPE
Datasheet	1 Copy	
Manual	1 Copy	

## Storage Instructions

All the reagents are stored at 2-8°C. The kit is stable for 6 months from the date of receipt.

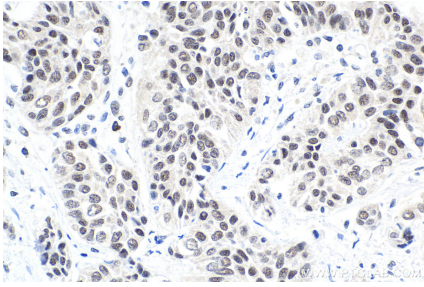
## Background

ETS variant gene 5 (ETV5) belongs to the ETS oncogene family that shares a conserved peptide, ETS domain, which mediates sequence-specific DNA binding. ETV5 is a transcription factor and is required for spermatogonial stem cell self-renewal. ETV5 can be negatively regulated by COP1, a tumor suppressor. Also it has a role in branching morphogenesis in the developing kidney.

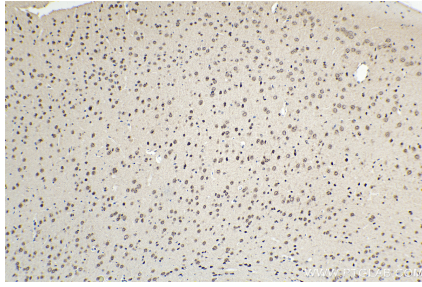
## Synonyms

ERM, Ets related protein ERM, ETS translocation variant 5, ets variant 5, ETV5

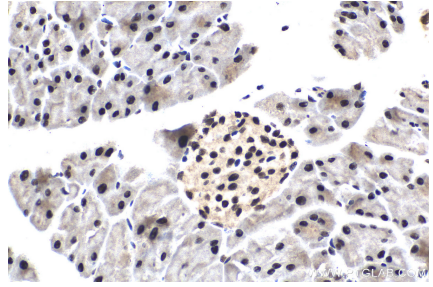
## Selected Validation Data



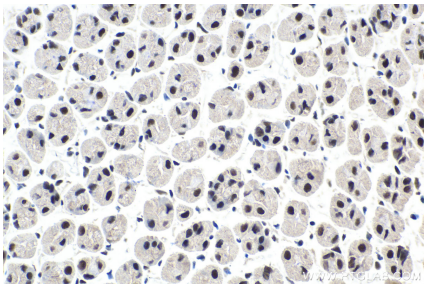
Immunohistochemical analysis of paraffin-embedded human urothelial carcinoma tissue slide using KHC1606 (ETV5 IHC Kit).



Immunohistochemical analysis of paraffin-embedded mouse brain tissue slide using KHC1606 (ETV5 IHC Kit).



Immunohistochemical analysis of paraffin-embedded mouse pancreas tissue slide using KHC1606 (ETV5 IHC Kit).



Immunohistochemical analysis of paraffin-embedded mouse stomach tissue slide using KHC1606 (ETV5 IHC Kit).