

# IHC*easy* ETHE1 Ready-To-Use IHC Kit

Catalog Number: **KHC1496**

## General Information

Sample type:  
FFPE tissue  
Cited sample type:  
Reactivity:  
Human  
Cited Reactivity:

Assay type:  
Immunohistochemistry  
Primary antibody type:  
Rabbit Polyclonal  
Secondary antibody type:  
Polymer-HRP-Goat anti-Rabbit

## Kit Component

Component	Size	Concentration
Antigen Retrieval Buffer	100 mL	50×
Washing Buffer	100 mL ×2	20×
Blocking Buffer	5 mL	RTU
Primary Antibody	5 mL	RTU
Secondary Antibody	5 mL	RTU
Chromogen Component A	0.2 mL	RTU
Chromogen Component B	4 mL	RTU
Signal Enhancer	5 mL	RTU
Counter Staining Reagent	5 mL	RTU
Mounting Media	5 mL	RTU
Control Slide	1 slide (Optional)	FFPE
Datasheet	1 Copy	
Manual	1 Copy	

## Storage Instructions

All the reagents are stored at 2-8°C. The kit is stable for 6 months from the date of receipt.

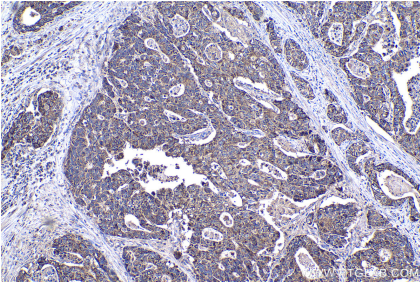
## Background

ETHE1, a gene encoding a b-lactamase-like, iron-coordinating metalloprotein, is mutated in ethylmalonic encephalopathy. In humans, ETHE1 gene is proved to encode the SDO in mitochondria and its mutations lead to a fatal autosomal recessive mitochondrial disease: ethylmalonic encephalopathy.

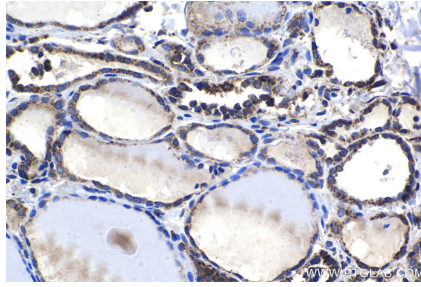
## Synonyms

ETHE1, ethylmalonic encephalopathy 1, HSCO, Protein ETHE1, mitochondrial, YF13H12

## Selected Validation Data



Immunohistochemical analysis of paraffin-embedded human stomach cancer tissue slide using KHC1496 (ETHE1 IHC Kit).



Immunohistochemical analysis of paraffin-embedded human thyroid cancer tissue slide using KHC1496 (ETHE1 IHC Kit).