

# IHC*easy* KHDRBS1 Ready-To-Use IHC Kit

Catalog Number: **KHC1391**

## General Information

**Sample type:**  
FFPE tissue

**Cited sample type:**

**Reactivity:**  
Human, Mouse, Rat

**Cited Reactivity:**

**Assay type:**  
Immunohistochemistry

**Primary antibody type:**  
Rabbit Polyclonal

**Secondary antibody type:**  
Polymer-HRP-Goat anti-Rabbit

## Kit Component

Component	Size	Concentration
Antigen Retrieval Buffer	100 mL	50×
Washing Buffer	100 mL ×2	20×
Blocking Buffer	5 mL	RTU
Primary Antibody	5 mL	RTU
Secondary Antibody	5 mL	RTU
Chromogen Component A	0.2 mL	RTU
Chromogen Component B	4 mL	RTU
Signal Enhancer	5 mL	RTU
Counter Staining Reagent	5 mL	RTU
Mounting Media	5 mL	RTU
Control Slide	1 slide (Optional)	FFPE
Datasheet	1 Copy	
Manual	1 Copy	

## Storage Instructions

All the reagents are stored at 2-8°C. The kit is stable for 6 months from the date of receipt.

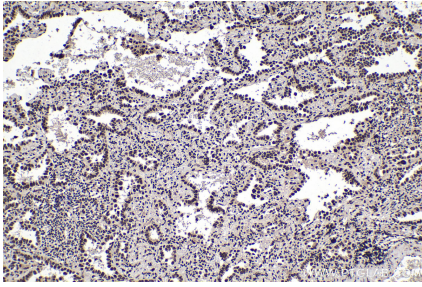
## Background

KHDRBS1, also named as SAM68, p62 and p68, belongs to the KHDRBS family. It is recruited and tyrosine phosphorylated by several receptor systems, for example the T-cell, leptin and INS receptors. Once phosphorylated, KHDRBS1 functions as an adapter protein in signal transduction cascades by binding to SH2 and SH3 domain-containing proteins. It represses CBP-dependent transcriptional activation apparently by competing with other nuclear factors for binding to CBP. KHDRBS1 also acts as a putative regulator of mRNA stability and/or translation rates and mediates mRNA nuclear export.

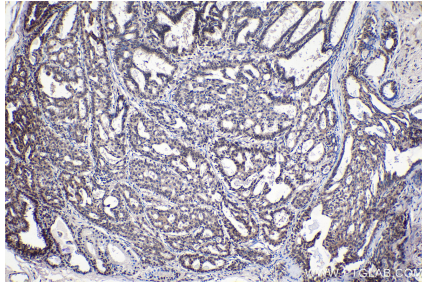
## Synonyms

KHDRBS1, p62, p68, Sam68

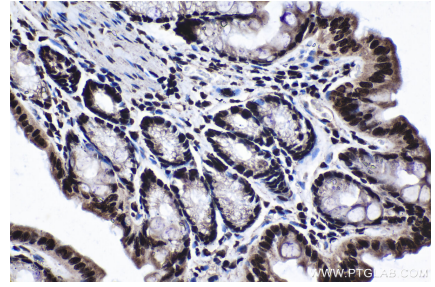
## Selected Validation Data



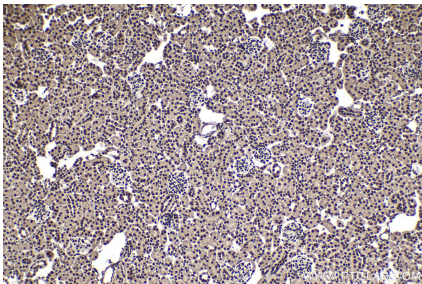
Immunohistochemical analysis of paraffin-embedded human lung cancer tissue slide using KHC1391 (KHDRBS1 IHC Kit).



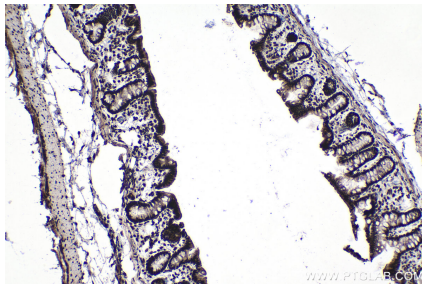
Immunohistochemical analysis of paraffin-embedded human breast cancer tissue slide using KHC1391 (KHDRBS1 IHC Kit).



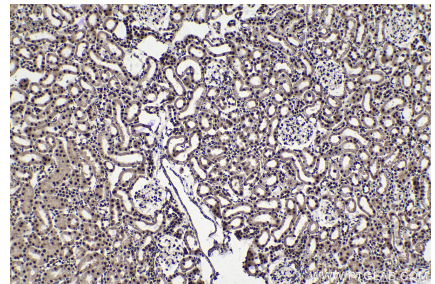
Immunohistochemical analysis of paraffin-embedded mouse colon tissue slide using KHC1391 (KHDRBS1 IHC Kit).



Immunohistochemical analysis of paraffin-embedded mouse kidney tissue slide using KHC1391 (KHDRBS1 IHC Kit).



Immunohistochemical analysis of paraffin-embedded rat colon tissue slide using KHC1391 (KHDRBS1 IHC Kit).



Immunohistochemical analysis of paraffin-embedded rat kidney tissue slide using KHC1391 (KHDRBS1 IHC Kit).