

IHC*easy* NFKBIA Ready-To-Use IHC Kit

Catalog Number: **KHC1368**

General Information

Sample type:
FFPE tissue

Cited sample type:

Reactivity:
Human, Mouse, Rat

Cited Reactivity:

Assay type:
Immunohistochemistry

Primary antibody type:
Mouse Monoclonal

Secondary antibody type:
Polymer-HRP-Goat anti-Mouse

Kit Component

| Component | Size | Concentration |
|--------------------------|--------------------|---------------|
| Antigen Retrieval Buffer | 100 mL | 50× |
| Washing Buffer | 100 mL ×2 | 20× |
| Blocking Buffer | 5 mL | RTU |
| Primary Antibody | 5 mL | RTU |
| Secondary Antibody | 5 mL | RTU |
| Chromogen Component A | 0.2 mL | RTU |
| Chromogen Component B | 4 mL | RTU |
| Signal Enhancer | 5 mL | RTU |
| Counter Staining Reagent | 5 mL | RTU |
| Mounting Media | 5 mL | RTU |
| Control Slide | 1 slide (Optional) | FFPE |
| Datasheet | 1 Copy | |
| Manual | 1 Copy | |

Storage Instructions

All the reagents are stored at 2-8°C. The kit is stable for 6 months from the date of receipt.

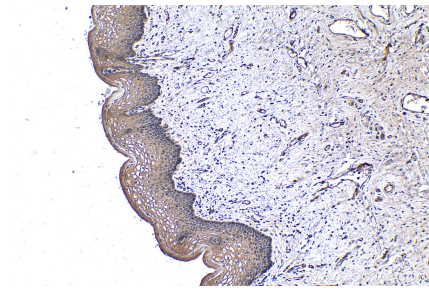
Background

Nuclear factor of kappa light polypeptide gene enhancer in B-cells inhibitor, alpha (NFKBIA, synonyms: IKBA, MAD-3, NFKBI), NFKB1 or NFKB2 is bound to REL, RELA, or RELB to form the NFKB complex. The NFKB complex is inhibited by I-kappa-B proteins (NFKBIA or NFKBIB), which inactivate NF-kappa-B by trapping it in the cytoplasm. Phosphorylation of serine residues on the I-kappa-B proteins by kinases (IKBKA, or IKBKB) marks them for destruction via the ubiquitination pathway, thereby allowing activation of the NF-kappa-B complex. Activated NFKB complex translocates into the nucleus and binds DNA at kappa-B-binding motifs such as 5-prime GGGRNYYCC 3-prime or 5-prime HGGARNYYCC 3-prime.

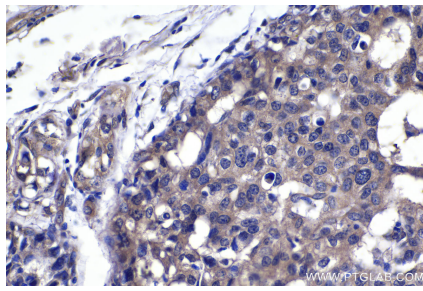
Synonyms

I kappa B alpha, IkappaBalphabet, IkB alpha, IKBA, MAD 3, MAD3, NF kappa B inhibitor alpha, NFKBI, NFKBIA

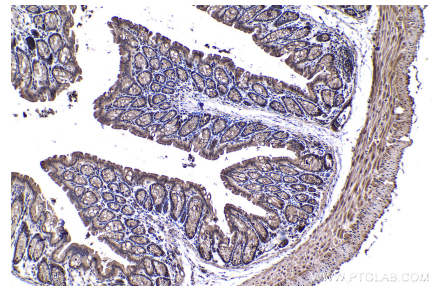
Selected Validation Data



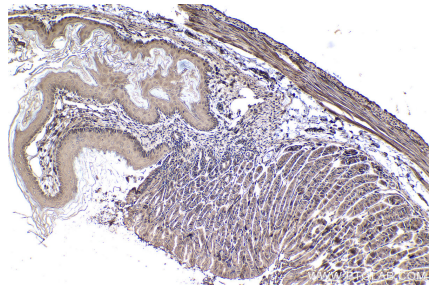
Immunohistochemical analysis of paraffin-embedded human cervical cancer tissue slide using KHC1368 (NFKBIA IHC Kit).



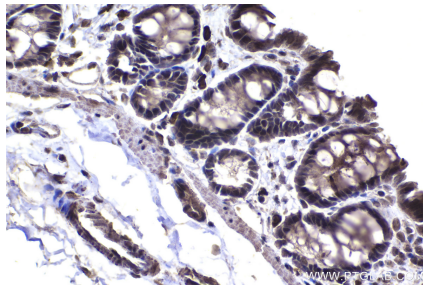
Immunohistochemical analysis of paraffin-embedded human breast cancer tissue slide using KHC1368 (NFKBIA IHC Kit).



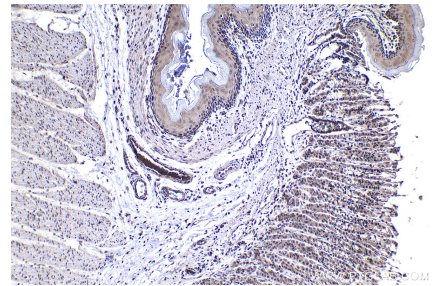
Immunohistochemical analysis of paraffin-embedded mouse colon tissue slide using KHC1368 (NFKBIA IHC Kit).



Immunohistochemical analysis of paraffin-embedded mouse stomach tissue slide using KHC1368 (NFKBIA IHC Kit).



Immunohistochemical analysis of paraffin-embedded rat colon tissue slide using KHC1368 (NFKBIA IHC Kit).



Immunohistochemical analysis of paraffin-embedded rat stomach tissue slide using KHC1368 (NFKBIA IHC Kit).