

IHC*easy* ARID1A Ready-To-Use IHC Kit

Catalog Number: **KHC1329**

General Information

Sample type:
FFPE tissue

Cited sample type:

Reactivity:
Human, Mouse, Rat

Cited Reactivity:

Assay type:
Immunohistochemistry

Primary antibody type:
Rabbit Polyclonal

Secondary antibody type:
Polymer-HRP-Goat anti-Rabbit

Kit Component

Component	Size	Concentration
Antigen Retrieval Buffer	100 mL	50×
Washing Buffer	100 mL ×2	20×
Blocking Buffer	5 mL	RTU
Primary Antibody	5 mL	RTU
Secondary Antibody	5 mL	RTU
Chromogen Component A	0.2 mL	RTU
Chromogen Component B	4 mL	RTU
Signal Enhancer	5 mL	RTU
Counter Staining Reagent	5 mL	RTU
Mounting Media	5 mL	RTU
Control Slide	1 slide (Optional)	FFPE
Datasheet	1 Copy	
Manual	1 Copy	

Storage Instructions

All the reagents are stored at 2-8°C. The kit is stable for 6 months from the date of receipt.

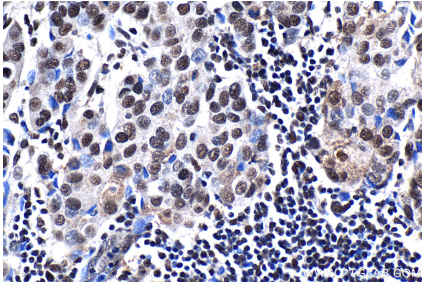
Background

ARID1A, also named as BAF250, BAF250A, C1orf4, OSA1 and SMARCF1, is involved in transcriptional activation and repression of select genes by chromatin remodeling (alteration of DNA-nucleosome topology). It binds DNA non-specifically. It is also involved in vitamin D-coupled transcription regulation via its association with the WINAC complex, a chromatin-remodeling complex recruited by vitamin D receptor (VDR), which is required for the ligand-bound VDR-mediated transrepression of the CYP27B1 gene. ARID1A belongs to the neural progenitors-specific chromatin remodeling complex (npBAF complex) and the neuron-specific chromatin remodeling complex (nBAF complex). During neural development a switch from a stem/progenitor to a post-mitotic chromatin remodeling mechanism occurs as neurons exit the cell cycle and become committed to their adult state. Primary antibody in this kit is specific to ARID1A.

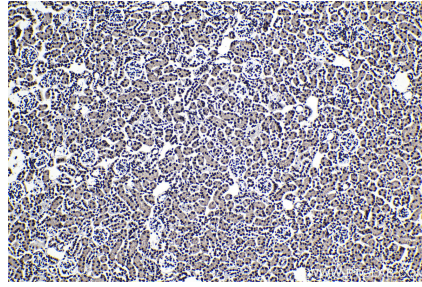
Synonyms

ARID1A, B120, BAF250, BAF250a, BMO29, BRG1 associated factor 250, BRG1 associated factor 250a, C1orf4, hELD, hOSA1, Osa homolog 1, OSA1, P270, SMARCF1, SWI like protein, SWI/SNF complex protein p270

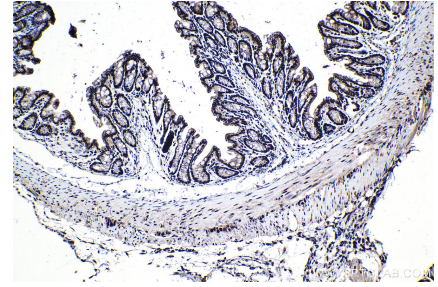
Selected Validation Data



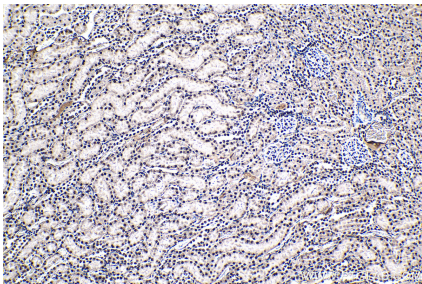
Immunohistochemical analysis of paraffin-embedded human breast cancer tissue slide using KHC1329 (ARID1A IHC Kit).



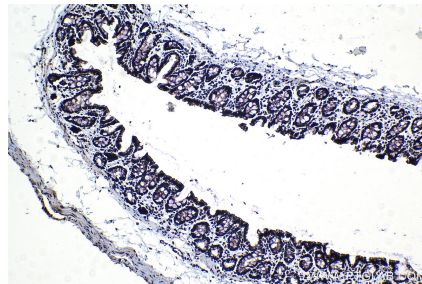
Immunohistochemical analysis of paraffin-embedded mouse kidney tissue slide using KHC1329 (ARID1A IHC Kit).



Immunohistochemical analysis of paraffin-embedded mouse colon tissue slide using KHC1329 (ARID1A IHC Kit).



Immunohistochemical analysis of paraffin-embedded rat kidney tissue slide using KHC1329 (ARID1A IHC Kit).



Immunohistochemical analysis of paraffin-embedded rat colon tissue slide using KHC1329 (ARID1A IHC Kit).