

IHC*easy* ARP3 Ready-To-Use IHC Kit

Catalog Number: **KHC1233**

General Information

Sample type:
FFPE tissue
Cited sample type:
Reactivity:
Human
Cited Reactivity:

Assay type:
Immunohistochemistry
Primary antibody type:
Rabbit Polyclonal
Secondary antibody type:
Polymer-HRP-Goat anti-Rabbit

Kit Component

Component	Size	Concentration
Antigen Retrieval Buffer	100 mL	50×
Washing Buffer	100 mL ×2	20×
Blocking Buffer	5 mL	RTU
Primary Antibody	5 mL	RTU
Secondary Antibody	5 mL	RTU
Chromogen Component A	0.2 mL	RTU
Chromogen Component B	4 mL	RTU
Signal Enhancer	5 mL	RTU
Counter Staining Reagent	5 mL	RTU
Mounting Media	5 mL	RTU
Control Slide	1 slide (Optional)	FFPE
Datasheet	1 Copy	
Manual	1 Copy	

Storage Instructions

All the reagents are stored at 2-8°C. The kit is stable for 6 months from the date of receipt.

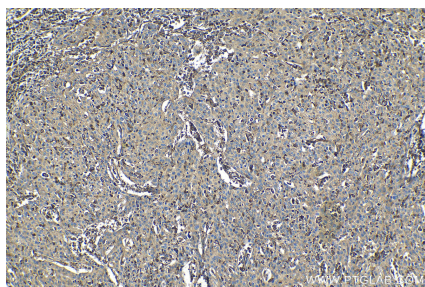
Background

ARP3 (also known as ACTR3) is a major constituent of the ARP2/3 complex that is necessary for nucleating actin polymerization at filament branches. ARP3 localizes to the lamellipodia of stationary and locomoting fibroblasts. Overexpression of ARP3 has been reported in several types of cancer cells. Primary antibody in this kit recognizes both endogenous ARP3 and may cross-react with ACTR3B.

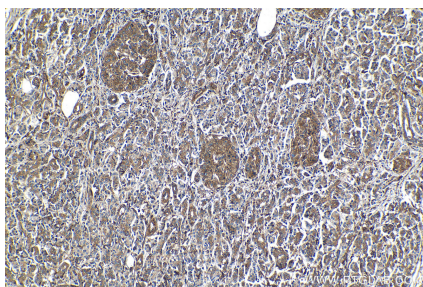
Synonyms

Actin like protein 3, Actin related protein 3, ACTR3, ACTR3B, Arp11, ARP3, ARP3/ARP3B, Arp4

Selected Validation Data



Immunohistochemical analysis of paraffin-embedded human cervical cancer tissue slide using KHC1233 (ARP3 IHC Kit).



Immunohistochemical analysis of paraffin-embedded human pancreas cancer tissue slide using KHC1233 (ARP3 IHC Kit).