

IHC*easy* PAP/ACPP Ready-To-Use IHC Kit

Catalog Number: **KHC1102**

General Information

Sample type:
FFPE tissue
Cited sample type:
Reactivity:
Human
Cited Reactivity:

Assay type:
Immunohistochemistry
Primary antibody type:
Rabbit Polyclonal
Secondary antibody type:
Polymer-HRP-Goat anti-Rabbit

Kit Component

Component	Size	Concentration
Antigen Retrieval Buffer	100 mL	50×
Washing Buffer	100 mL ×2	20×
Blocking Buffer	5 mL	RTU
Primary Antibody	5 mL	RTU
Secondary Antibody	5 mL	RTU
Chromogen Component A	0.2 mL	RTU
Chromogen Component B	4 mL	RTU
Signal Enhancer	5 mL	RTU
Counter Staining Reagent	5 mL	RTU
Mounting Media	5 mL	RTU
Control Slide	1 slide (Optional)	FFPE
Datasheet	1 Copy	
Manual	1 Copy	

Storage Instructions

All the reagents are stored at 2-8°C. The kit is stable for 6 months from the date of receipt.

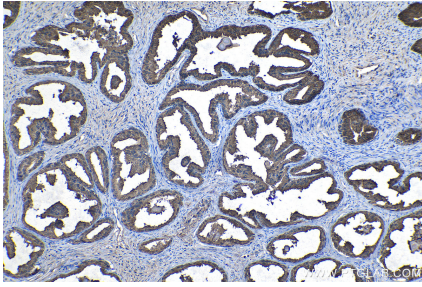
Background

ACPP is also named as PAP(prostatic acid phosphatase),5'-nucleotidase,thiamine monophosphatas and Belongs to the histidine acid phosphatase family. This enzyme is a homodimeric glycoprotein with a subunit molecular mass of 50 kDa and is an androgen-stimulated secretory product of the human prostate gland. It is also a non-specific phosphatase and has been implicated in the progression of prostate cancer, which inactivates LPA in human seminal plasma.

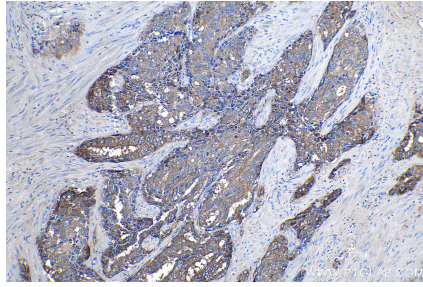
Synonyms

acid phosphatase, prostate, ACP 3, ACP3, ACPP, PAP, Prostatic acid phosphatase

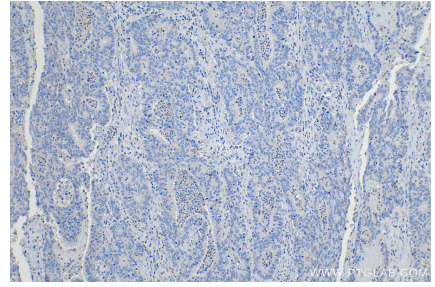
Selected Validation Data



Immunohistochemical analysis of paraffin-embedded human prostate cancer tissue slide using KHC1102 (PAP/ACPP IHC Kit).



Immunohistochemical analysis of paraffin-embedded human prostate hyperplasia tissue slide using KHC1102 (PAP/ACPP IHC Kit).



Immunohistochemical analysis of paraffin-embedded human colon cancer tissue slide (negative control) using KHC1102 (PAP/ACPP IHC Kit).