

# IHC*easy* MYH1 Ready-To-Use IHC Kit

Catalog Number: **KHC0364**

## General Information

**Sample type:**  
FFPE tissue

**Cited sample type:**

**Reactivity:**  
Human, Mouse, Rat

**Cited Reactivity:**

**Assay type:**  
Immunohistochemistry

**Primary antibody type:**  
Mouse Monoclonal

**Secondary antibody type:**  
Polymer-HRP-Goat anti-Mouse

## Kit Component

Component	Size	Concentration
Antigen Retrieval Buffer	100 mL	50×
Washing Buffer	100 mL × 2	20×
Blocking Buffer	5 mL	RTU
Primary Antibody	5 mL	RTU
Secondary Antibody	5 mL	RTU
Chromogen Component A	0.2 mL	RTU
Chromogen Component B	4 mL	RTU
Signal Enhancer	5 mL	RTU
Counter Staining Reagent	5 mL	RTU
Mounting Media	5 mL	RTU
Control Slide	1 slide (Optional)	FFPE
Datasheet	1 Copy	
Manual	1 Copy	

## Storage Instructions

All the reagents are stored at 2-8°C. The kit is stable for 6 months from the date of receipt.

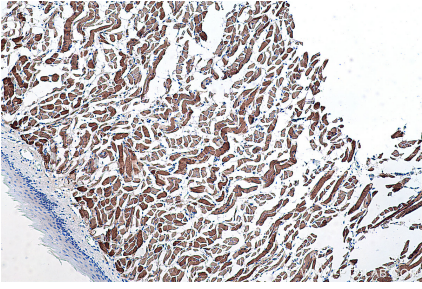
## Background

MYH1 (MyHC-2x) encodes the IIX isoform of myosin heavy chain (MyHC). Myosin is a large, ubiquitous, motor protein that generates force through its interaction with actin, thus involving it in a number of cellular processes including cytokinesis, karyokinesis, cell migration, and muscle contraction. Muscle fibers can be divided as type 1 (slow) and type 2 (fast). MYH1 belongs to type 2.

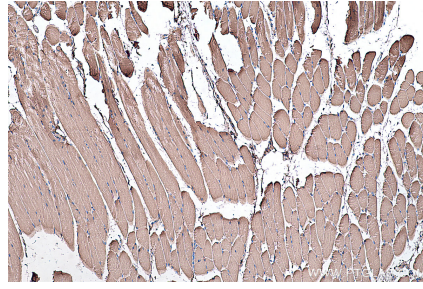
## Synonyms

MYH1, MYHa, MyHC 2x, MyHC 2X/D, MyHC IIX/d, MYHSA1, Myosin 1, Myosin heavy chain 1, Myosin heavy chain 2x, Myosin heavy chain IIX/d

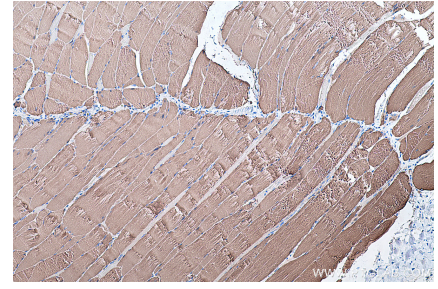
## Selected Validation Data



Immunohistochemical analysis of paraffin-embedded mouse tongue tissue slide using KHC0364 (MYH1 IHC Kit).



Immunohistochemical analysis of paraffin-embedded mouse skeletal muscle tissue slide using KHC0364 (MYH1 IHC Kit).



Immunohistochemical analysis of paraffin-embedded rat skeletal muscle tissue slide using KHC0364 (MYH1 IHC Kit).