

For Research Use Only

Recombinant Human CD20 protein (His Tag)



Catalog Number: Eg0195

Basic Information

ED50:
10-40 ng/mL

GeneID:
931

Species:
Human

Accession:
P11836-1

Purity:
>95 %, SDS-PAGE

Technical Specifications

Purity:
>95 %, SDS-PAGE

Endotoxin Level:
<1.0 EU/ μ g protein, LAL method

Source:
HEK293-derived Human CD20 protein Glu213-Pro297 (Accession# P11836-1) with a His tag at the N-terminus.

Predicted Molecular Mass:
10.6 kDa

SDS-PAGE:
20-23 kDa, reducing (R) conditions

Formulation:
Lyophilized from sterile PBS, pH 7.4. Normally 5% trehalose and 5% mannitol are added as protectants before lyophilization.

Biological Activity

Immobilized Rituximab at 0.5 μ g/mL (100 μ L/well) can bind Human CD20 (His tag) with a linear range of 10-40 ng/mL.

Storage and Shipping

Storage:
It is recommended that the protein be aliquoted for optimal storage. Avoid repeated freeze-thaw cycles.

- 12 months from the date of receipt, -20°C to -80°C as lyophilized proteins.
- 3 months, -20°C to -80°C under sterile conditions after reconstitution.

Shipping:
The product is shipped at ambient temperature. Upon receipt, store it immediately at the recommended temperature.

Reconstitution

Briefly centrifuge the tube before opening. Reconstitute at 0.1-0.5 mg/mL in sterile water.

Background

CD20 is a B-lymphocyte surface molecule that is widely expressed during B-cell ontogeny but not on either early pro-B cells or plasma blasts and plasma cells. It is found on B-cell lymphomas, hairy cell leukemia, B-cell chronic lymphocytic leukemia, and melanoma cancer stem cells. Its function is to enable optimal B-cell immune response, specifically against T-independent antigens. CD20 functions as calcium-permeable cation channel. It is involved in the regulation of B-cell activation and proliferation.

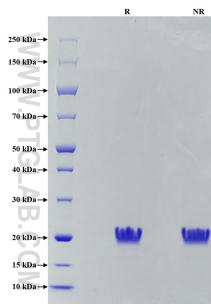
References

1. Dong Fang. et al.(2005) Cancer Res. 65(20): 9328-37.
2. Pedersen M. et al.(2008) Biochem Biophys Res Commun. 377(1): 98-103.
3. Maria J Polyak. et al.(2008) J Biol Chem. 283(27): 18545-52.
4. Taco W Kuijpers. et al.(2010) J Clin Invest. 120(1): 214-22.
5. Gabriela Pavlasova. et al.(2018) Leukemia. 32(9): 2028-2031.

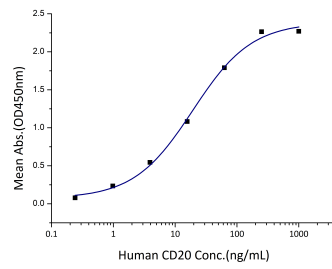
Synonyms

B1, Bp35, CD20, CVID5, LEU-16, MS4A1, MS4A2, S7

Selected Validation Data



Purity of Recombinant Human CD20 was determined by SDS-PAGE. The protein was resolved in an SDS-PAGE in reducing (R) and non-reducing (NR) conditions and stained using Coomassie blue.



Immobilized Rituximab at 0.5 μ g/mL (100 μ L/well) can bind Human CD20 (His tag) with a linear range of 10-40 ng/mL.

For technical support and original validation data for this product please contact

T: 027-87531629

E: Proteintech-CN@ptglab.com

W: ptgcn.com

This product is exclusively available under Proteintech Group brand and is not available to purchase from any other manufacturer.