

For Research Use Only

# CoraLite® Plus 647-conjugated Beta Actin Recombinant antibody



Catalog Number:CL647-81115

## Basic Information

<b>Catalog Number:</b> CL647-81115	<b>GenBank Accession Number:</b> BC002409	<b>Purification Method:</b> Protein A purification
<b>Size:</b> 1000 µg/ml	<b>GeneID (NCBI):</b> 60	<b>CloneNo.:</b> 4H1
<b>Source:</b> Rabbit	<b>UNIPROT ID:</b> P60709	<b>Recommended Dilutions:</b> IF 1:250-1:1000
<b>Isotype:</b> IgG	<b>Full Name:</b> actin, beta	<b>Excitation/Emission maxima wavelengths:</b> 654 nm / 674 nm
<b>Immunogen Catalog Number:</b> AG14521	<b>Calculated MW:</b> 375 aa, 42 kDa	
	<b>Observed MW:</b> 42 kDa	

## Applications

<b>Tested Applications:</b> IF/ICC	<b>Positive Controls:</b> IF : MDCK cells,
<b>Species Specificity:</b> Human, pig, rat, mouse, canine	

## Background Information

Beta Actin, also named as ACTB and F-Actin, belongs to the actin family. Actins are highly conserved globular proteins that are involved in various types of cell motility and are ubiquitously expressed in all eukaryotic cells. At least six isoforms of actins are known in mammals and other vertebrates: alpha (ACTC1, cardiac muscle 1), alpha 1 (ACTA1, skeletal muscle) and 2 (ACTA2, aortic smooth muscle), beta (ACTB), gamma 1 (ACTG1) and 2 (ACTG2, enteric smooth muscle). Beta and gamma 1 are two non-muscle actin proteins. Most actins consist of 376aa, while ACTG2 (rich in muscles) has 375aa and ACTG1(found in non-muscle cells) has only 374aa. Beta actin has been widely used as the internal control in RT-PCR and Western Blotting as a 42-kDa protein. However, the 37-40, 31, 15 kDa cleaved fragment of beta actin can be generated during apoptosis process. This antibody was generated against N-terminal region of human beta actin protein and can cross-react with other actins. (9173887, 11217076, 10229193 )

## Storage

**Storage:**  
Store at -20°C. Avoid exposure to light. Stable for one year after shipment.  
**Storage Buffer:**  
PBS with 50% Glycerol, 0.05% Proclin300, 0.5% BSA, pH 7.3.  
Aliquoting is unnecessary for -20°C storage

For technical support and original validation data for this product please contact:

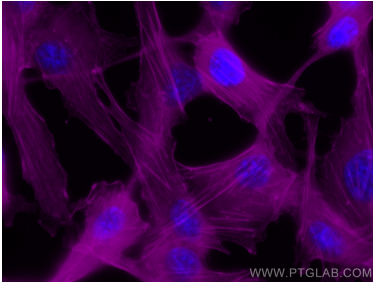
T: 4006900926

E: [Proteintech-CN@ptglab.com](mailto:Proteintech-CN@ptglab.com)

W: [ptgcn.com](http://ptgcn.com)

This product is exclusively available under Proteintech Group brand and is not available to purchase from any other manufacturer.

## Selected Validation Data



Immunofluorescent analysis of (-20°C Methanol) fixed MDCK cells using CoraLite® Plus 647 Beta Actin antibody (CL647-81115, Clone: 4H1 ) at dilution of 1:500.