

CoraLite® Plus 647-conjugated IL-6 Monoclonal antibody

Catalog Number: **CL647-69001**

Basic Information

Catalog Number:

CL647-69001

Size:

1000 µg/ml

Source:

Mouse

Isotype:

IgG1

Immunogen Catalog Number:

HZ-1019

GenBank Accession Number:

GeneID (NCBI):

3569

ENSEMBL Gene ID:

ENSG00000136244

Full Name:

interleukin 6 (interferon, beta 2)

Purification Method:

Protein G purification

CloneNo.:

4G3E6

Excitation/Emission maxima wavelengths:

654 nm / 674 nm

Applications

Tested Applications:

FC (Intra)

Species Specificity:

Human

Background Information

Interleukin-6 (IL-6) is an interleukin that acts as both a pro-inflammatory and anti-inflammatory cytokine. IL-6 protein is secreted by a variety of cell types including T cells and macrophages as phosphorylated and variably glycosylated molecule. IL-6 plays an essential role in the final differentiation of B-cells into Ig-secreting cells involved in lymphocyte and monocyte differentiation. It induces myeloma and plasmacytoma growth and induces nerve cells differentiation. Acts on B-cells, T-cells, hepatocytes, hematopoietic progenitor cells and cells of the CNS. IL-6 is also considered a myokine, a cytokine produced from muscle, and is elevated in response to muscle contraction. IL-6 has been shown to interact with interleukin-6 receptor and glycoprotein 130. Additionally, IL-6 is involved in hematopoiesis, bone metabolism, and cancer progression, and has been defined an essential role in directing transition from innate to acquired immunity.

This antibody is used to Block/Neutralize IL6 protein.

Storage

Storage:

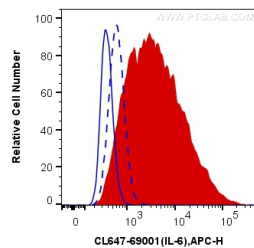
Store at -20°C. Avoid exposure to light. Stable for one year after shipment.

Storage Buffer:

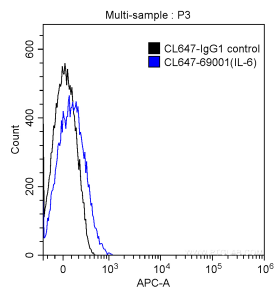
PBS with 50% Glycerol, 0.05% Proclin300, 0.5% BSA, pH 7.3.

Aliquoting is unnecessary for -20°C storage

Selected Validation Data



1X10⁶ HUVEC cells untreated (dashed lines) or treated with LPS and Brefeldin A (red) were intracellularly stained with 0.25 ug CoraLite® Plus 647 Anti-Human IL-6 (CL647-69001, Clone:4G3E6), or 0.25 ug Control Antibody (blue). Cells were fixed with 4% PFA and permeabilized with Flow Cytometry Perm Buffer (PF00011-C).



1X10⁶ HT-1080 cells were treated with fixation and permeabilization reagents and intracellularly stained with 0.5 ug CoraLite® Plus 647 Anti-Human IL-6 (CL647-69001, Clone:4G3E6) (blue), and 0.5 ug Control Antibody.