

For Research Use Only

CoraLite® Plus 647 Anti-Human PD-1/CD279 (EH12.2H7)



Catalog Number: CL647-65168

Basic Information

Catalog Number: CL647-65168	GenBank Accession Number: BC074740	Purification Method: Affinity purification
Size: 100tests, 5 µl/test	GeneID (NCBI): 5133	CloneNo.: EH12.2H7
Source: Mouse	UNIPROT ID: Q15116	Excitation/Emission maxima wavelengths: 654 nm / 674 nm
Isotype: IgG1, kappa	Full Name: programmed cell death 1	
	Calculated MW: 288 aa, 32 kDa	

Applications

Tested Applications:
FC

Species Specificity:
Non-human primates, Human

Background Information

Programmed cell death 1 (PD-1, also known as CD279) is an immunoinhibitory receptor that belongs to the CD28/CTLA-4 subfamily of the Ig superfamily. It is a 288 amino acid (aa) type I transmembrane protein composed of one Ig superfamily domain, a stalk, a transmembrane domain, and an intracellular domain containing an immunoreceptor tyrosine-based inhibitory motif (ITIM) as well as an immunoreceptor tyrosine-based switch motif (ITSM) (PMID: 18173375). PD-1 is expressed during thymic development and is induced in a variety of hematopoietic cells in the periphery by antigen receptor signaling and cytokines (PMID: 20636820). Engagement of PD-1 by its ligands PD-L1 or PD-L2 transduces a signal that inhibits T-cell proliferation, cytokine production, and cytolytic function (PMID: 19426218). It is critical for the regulation of T cell function during immunity and tolerance. Blockade of PD-1 can overcome immune resistance and also has been shown to have antitumor activity (PMID: 22658127; 23169436).

Storage

Storage:
Store at 2-8°C. Avoid exposure to light. Stable for one year after shipment.

Storage Buffer:
PBS with 0.09% sodium azide and 0.5% BSA.

For technical support and original validation data for this product please contact:

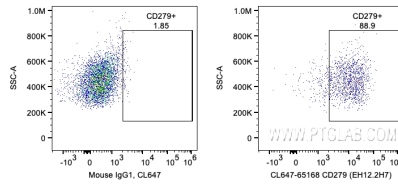
T: 4006900926

E: Proteintech-CN@ptglab.com

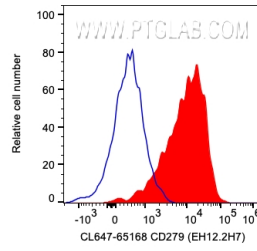
W: ptgcn.com

This product is exclusively available under Proteintech Group brand and is not available to purchase from any other manufacturer.

Selected Validation Data



1X10⁶ day 3 PHA activated human PBMCs were surface stained with 5 ul CoraLite® Plus 647 Anti-Human PD-1/CD279 (CL647-65168, Clone:EH12.2H7) or Mouse IgG1 Isotype Control. Cells were not fixed. Lymphocytes were gated.



1X10⁶ day 3 PHA activated human PBMCs were surface stained with 5 ul CoraLite® Plus 647 Anti-Human PD-1/CD279 (CL647-65168, Clone:EH12.2H7) or Mouse IgG1 Isotype Control. Cells were not fixed. Lymphocytes were gated.