

For Research Use Only

CoraLite® Plus 647 Anti-Mouse CD103 (2E7)



Catalog Number: **CL647-65047**

Basic Information

Catalog Number:

CL647-65047

Size:

100ug, 500 µg/ml

Source:

Hamster

Isotype:

IgG

GenBank Accession Number:

BC150690

GeneID (NCBI):

16407

UNIPROT ID:

Q60677

Full Name:

integrin alpha E, epithelial-associated

Purification Method:

Affinity purification

CloneNo.:

2E7

Excitation/Emission maxima wavelengths:

654 nm / 674 nm

Applications

Tested Applications:

FC

Species Specificity:

Mouse

Background Information

CD103, also known as integrin alpha-E (ITGAE) or integrin alpha-IEL, is a type I transmembrane integrin protein that binds integrin beta 7 to form Integrin alpha-E beta-7 which is a receptor for E-cadherin and mediates adhesion of T lymphocytes to epithelial cells (PMID: 7969453; 8468482). CD103 is expressed on intraepithelial lymphocyte (IEL) T cells (both alpha/beta T cells and gamma/delta T cells), some peripheral regulatory T cells (Tregs), lamina propria T cells, and a subset of dendritic cells in the gut mucosa and mesenteric lymph nodes (PMID: 12242333; 15608520; 16216890).

Storage

Storage:

Store at 2-8°C. Avoid exposure to light. Stable for one year after shipment.

Storage Buffer:

PBS with 0.1% sodium azide and 0.5% BSA, pH 7.3.

For technical support and original validation data for this product please contact:

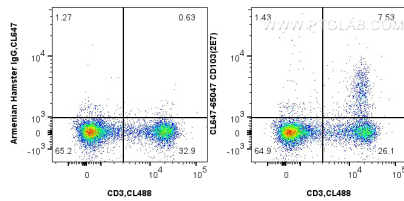
T: 4006900926

E: Proteintech-CN@ptglab.com

W: ptgcn.com

This product is exclusively available under Proteintech Group brand and is not available to purchase from any other manufacturer.

Selected Validation Data



1x10⁶ mouse splenocytes were surface stained with 0.4 ug CoraLite® Plus 647 Anti-Mouse CD103 (CL647-65047, Clone:2E7) or 0.4 ug Isotype Control, and 0.4 ug CoraLite® Plus 488 Anti-Mouse CD3 (17A2) (CL488-65077, Clone: 17A2). Cells were not fixed.