

For Research Use Only

CoraLite® Plus 594-conjugated GPI Monoclonal antibody



Catalog Number: CL594-67178

Featured Product

Basic Information

Catalog Number:

CL594-67178

Size:

1000 µg/ml

Source:

Mouse

Isotype:

IgG1

Immunogen Catalog Number:

AG7419

GenBank Accession Number:

BC004982

GeneID (NCBI):

2821

UNIPROT ID:

P06744

Full Name:

glucose phosphate isomerase

Calculated MW:

63 kDa

Observed MW:

55-64 kDa

Purification Method:

Protein G purification

CloneNo.:

2F11E4

Recommended Dilutions:

IF 1:50-1:500

Excitation/Emission maxima
wavelengths:

594 nm / 615 nm

Applications

Tested Applications:

IF/ICC

Species Specificity:

Human

Positive Controls:

IF : PC-3 cells,

Background Information

GPI (Glucose-6-phosphate isomerase), which is also named as autocrine motility factor (AMF), phosphoglucose isomerase (PGI), Neuroleukinin (NLK), phosphohexose isomerase (PHI) or sperm antigen 36 (SA-36), is a housekeeping cytosolic enzyme that plays a key role in both glycolysis and gluconeogenesis pathways. It is also a multifunctional protein that displays cytokine properties, eliciting mitogenic, motogenic, and differentiation activities, and has been implicated in tumor progression and metastasis (PMID:12783864, 19603112). This protein can exist as a homodimer in the catalytically active form and a monomer in the secreted form (PMID:11371164). It has 2 isoforms produced by alternative splicing with the calculated molecular mass of 63-64 kDa, and an apparent molecular mass of 55 and 64 kDa under non-reducing and reducing conditions, respectively (PMID: 19603112, 11004567).

Storage

Storage:

Store at -20°C. Avoid exposure to light. Stable for one year after shipment.

Storage Buffer:

PBS with 50% Glycerol, 0.05% Proclin300, 0.5% BSA, pH 7.3.

Aliquoting is unnecessary for -20°C storage

For technical support and original validation data for this product please contact:

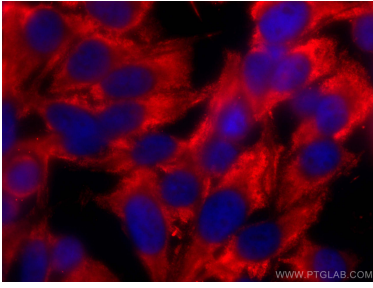
T: 4006900926

E: Proteintech-CN@ptglab.com

W: ptgcn.com

This product is exclusively available under Proteintech Group brand and is not available to purchase from any other manufacturer.

Selected Validation Data



Immunofluorescent analysis of (-20°C Methanol) fixed PC-3 cells using CoraLite® Plus 594 GPI antibody (CL594-67178, Clone: 2F11E4) at dilution of 1:200.