

For Research Use Only

# CoraLite®594-conjugated Caspase 2/p32/p18 Monoclonal antibody



Catalog Number:CL594-66517

## Basic Information

Catalog Number:

CL594-66517

Size:

1000 µg/ml

Source:

Mouse

Isotype:

IgG1

Immunogen Catalog Number:

AG20141

GenBank Accession Number:

BC002427

GeneID (NCBI):

835

UNIPROT ID:

P42575

Full Name:

caspase 2, apoptosis-related cysteine peptidase

Calculated MW:

452 aa, 51 kDa

Observed MW:

48-51 kDa, 32 kDa, 18 kDa

Purification Method:

Protein G purification

CloneNo.:

2G4C2

Recommended Dilutions:

IF 1:50-1:500

Excitation/Emission maxima wavelengths:

588 nm / 604 nm

## Applications

Tested Applications:

IF/ICC

Species Specificity:

Human

Positive Controls:

IF : HeLa cells,

## Background Information

CASP2(Caspase-2) is also named as ICH1, NEDD2 and belongs to the peptidase C14A family. It is involved in the activation cascade of caspases responsible for apoptosis execution and might function by either activating some proteins required for cell death or inactivating proteins necessary for cell survival. It has 2 isoforms produced by alternative splicing and can exist almost as a dimer in solution (PMID:15865942). This antibody can recognize the 32 kDa pro-caspase 2 as well as 18 kDa cleaved-caspase 2.

## Storage

Storage:

Store at -20°C. Avoid exposure to light. Stable for one year after shipment.

Storage Buffer:

PBS with 50% Glycerol, 0.05% Proclin300, 0.5% BSA, pH 7.3.

Aliquoting is unnecessary for -20°C storage

For technical support and original validation data for this product please contact:

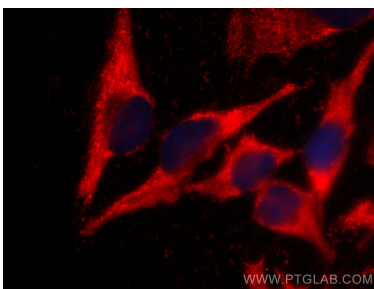
T: 4006900926

E: Proteintech-CN@ptglab.com

W: ptgcn.com

This product is exclusively available under Proteintech Group brand and is not available to purchase from any other manufacturer.

## Selected Validation Data



Immunofluorescent analysis of (-20°C Ethanol) fixed HeLa cells using CoraLite®594 Caspase 2/p32/p18 antibody (CL594-66517, Clone: 2G4C2) at dilution of 1:200.