

# CoraLite®594-conjugated Cytokeratin 7 Monoclonal antibody

Catalog Number: **CL594-66483**

## Basic Information

### Catalog Number:

CL594-66483

### Size:

1000 µg/ml

### Source:

Mouse

### Isotype:

IgG2a

### Immunogen Catalog Number:

AG7895

### GenBank Accession Number:

BC002700

### GeneID (NCBI):

3855

### UNIPROT ID:

P08729

### Full Name:

keratin 7

### Calculated MW:

469 aa, 51 kDa

### Purification Method:

Protein A purification

### CloneNo.:

2E1G5

### Recommended Dilutions:

IF 1:50-1:500

### Excitation/Emission maxima wavelengths:

588 nm / 604 nm

## Applications

### Tested Applications:

IF/ICC, IF-P

### Species Specificity:

Human

### Positive Controls:

IF : human lung cancer tissue, human prostate cancer tissue

## Background Information

Keratins are a large family of proteins that form the intermediate filament cytoskeleton of epithelial cells, which are classified into two major sequence types. Type I keratins are a group of acidic intermediate filament proteins, including K9-K23, and the hair keratins Ha1-Ha8. Type II keratins are the basic or neutral counterparts to the acidic type I keratins, including K1-K8, and the hair keratins, Hb1-Hb6. KRT7, also named as cytokeratin 7, is one member of type II basic cytokeratin. It is specifically expressed in the simple epithelia lining the cavities of the internal organs and in the gland ducts and blood vessels, and their neoplasms. KRT7 is marker of epithelial tissues, but not present in carcinomas of stratified squamous cell origin. This antibody is specifically against KRT7. The antibody is conjugated with CL594, Ex/Em 593 nm/614 nm.

## Storage

### Storage:

Store at -20°C. Avoid exposure to light. Stable for one year after shipment.

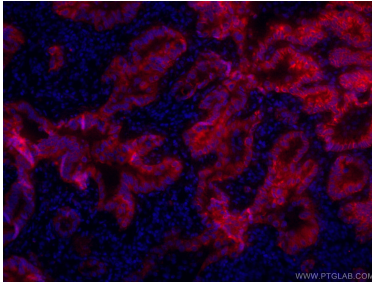
### Storage Buffer:

PBS with 50% Glycerol, 0.05% Proclin300, 0.5% BSA, pH 7.3.

Aliquoting is unnecessary for -20°C storage

---

## Selected Validation Data



Immunofluorescent analysis of (4% PFA) fixed human lung cancer tissue using CL594-66483 (Cytokeratin 7 antibody) at dilution of 1:50 .