

For Research Use Only

CoraLite®594-conjugated Myosin Light Chain 2/MLC-2V Polyclonal antibody



Catalog Number: **CL594-10906**

Basic Information

Catalog Number: CL594-10906	GenBank Accession Number: BC015821	Purification Method: Antigen affinity purification
Size: 1000 µg/ml	GeneID (NCBI): 4633	Recommended Dilutions: IF 1:50-1:500
Source: Rabbit	UNIPROT ID: P10916	Excitation/Emission maxima wavelengths: 588 nm / 604 nm
Isotype: IgG	Full Name: myosin, light chain 2, regulatory, cardiac, slow	
Immunogen Catalog Number: AG1356	Calculated MW: 19 kDa	
	Observed MW: 19 kDa	

Applications

Tested Applications: IF-P	Positive Controls: IF : mouse heart tissue,
Species Specificity: human, mouse, rat, zebrafish	

Background Information

MYL2, also named as MLC-2v and MLC-2, is ventricular/cardiac muscle isoform. Defects in MYL2 are the cause of cardiomyopathy familial hypertrophic type 10 (CMH10). Defects in MYL2 are the cause of cardiomyopathy familial hypertrophic with mid-left ventricular chamber type 2 (MVC2). MYL2 has been widely used as a marker of mature ventricular cardiomyocytes. There are four genes of myosin light chain 2 (MLC2): MYL2 (MLC2v), MYL5, MYL7 (MLC2a) and MYL9 (MLC2c). While usually myosin light chain 2 is referred to MYL2.

Storage

Storage:
Store at -20°C. Avoid exposure to light.
Storage Buffer:
PBS with 50% Glycerol, 0.05% Proclin300, 0.5% BSA, pH 7.3.
Aliquoting is unnecessary for -20°C storage

For technical support and original validation data for this product please contact:

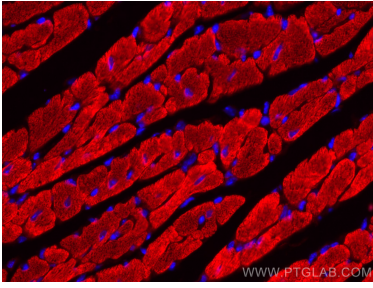
T: 4006900926

E: Proteintech-CN@ptglab.com

W: ptgcn.com

This product is exclusively available under Proteintech Group brand and is not available to purchase from any other manufacturer.

Selected Validation Data



Immunofluorescent analysis of (4% PFA) fixed mouse heart tissue using CoraLite®594 Myosin Light Chain 2/MLC-2V antibody (CL594-10906) at dilution of 1:200.