

For Research Use Only

CoraLite®594-conjugated Mouse-IgG Polyclonal antibody



Catalog Number:CL594-10283

Basic Information

Catalog Number:

CL594-10283

Size:

1000 µg/ml

Source:

Rabbit

Isotype:

IgG

GenBank Accession Number:

GeneID (NCBI):

Full Name:

Calculated MW:

155 kDa

Observed MW:

25 kDa, 50-55 kDa

Purification Method:

Antigen affinity purification

Recommended Dilutions:

IF 1:50-1:500

Excitation/Emission maxima wavelengths:

588 nm / 604 nm

Applications

Tested Applications:

IF/ICC

Species Specificity:

mouse

Positive Controls:

IF : HeLa cells,

Background Information

This antibody detects all the heavy and light chains of total mouse IgG.

Storage

Storage:

Store at -20°C. Avoid exposure to light.

Storage Buffer:

PBS with 50% Glycerol, 0.05% Proclin300, 0.5% BSA, pH 7.3.

Aliquoting is unnecessary for -20°C storage

For technical support and original validation data for this product please contact:

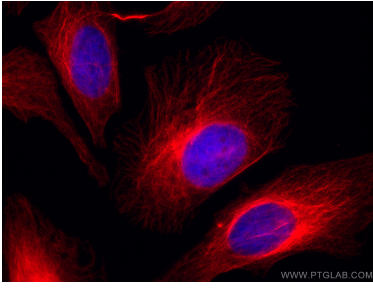
T: 4006900926

E: Proteintech-CN@ptglab.com

W: ptgcn.com

This product is exclusively available under Proteintech Group brand and is not available to purchase from any other manufacturer.

Selected Validation Data



Immunofluorescent analysis of (4% PFA) fixed HeLa cells using 66031-1-Ig (alpha tubulin antibody) and CL594-10283 (CL594-Rabbit anti-Mouse IgG as secondary antibody at dilution of 1:200.