

For Research Use Only

CoraLite®555-conjugated NeutraKine® IFN Gamma Monoclonal antibody



Catalog Number: **CL555-69007**

Basic Information

Catalog Number: CL555-69007	GenBank Accession Number: GeneID (NCBI): 3458	Purification Method: Protein G purification
Size: 1000 µg/ml	ENSEMBL Gene ID: ENSG00000111537	CloneNo.: 1E10G7
Source: Mouse	Full Name: IFN gamma	Excitation/Emission maxima wavelengths: 557 nm / 570nm
Isotype: IgG1		
Immunogen Catalog Number: HZ-1301		

Applications

Tested Applications:
FC (Intra)

Species Specificity:
Human

Background Information

Interferon gamma (IFNG) is a soluble cytokine that is the only member of the type II class of interferons. It is secreted by Th1 cells, cytotoxic T cells and NK cells. The cytokine is associated with antiviral, immunoregulatory and anti-tumor properties and is a potent activator of macrophages. It plays crucial roles in pathogen clearance. Aberrant IFNG expression is associated with a number of autoinflammatory and autoimmune diseases. It has been identified in many studies as a biomarker for pleural tuberculosis (TB). Mutations in this gene are associated with aplastic anemia.

This antibody can be used to neutralize the bioactivity of Interferon gamma.

Storage

Storage:
Store at -20°C. Avoid exposure to light. Stable for one year after shipment.

Storage Buffer:
PBS with 50% Glycerol, 0.05% Proclin300, 0.5% BSA, pH 7.3.

Aliquoting is unnecessary for -20°C storage

For technical support and original validation data for this product please contact:

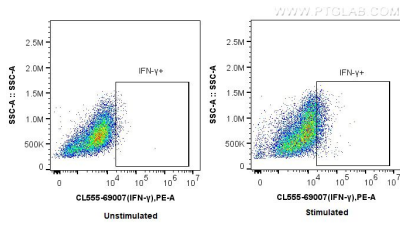
T: 4006900926

E: Proteintech-CN@ptglab.com

W: ptgcn.com

This product is exclusively available under Proteintech Group brand and is not available to purchase from any other manufacturer.

Selected Validation Data



1X10⁶ PMA and ionomycin treated Jurkat cells were intracellularly stained with 0.25 ug CoraLite®555 Anti-Human NeutraKine® IFN Gamma (CL555-69007, Clone:1E10G7), and 0.25 ug x. Cells were fixed with 4% PFA and permeabilized with Flow Cytometry Perm Buffer (PF00011-C).