

For Research Use Only

# CoraLite®555-conjugated TIP47 Monoclonal antibody



Catalog Number:CL555-66523

## Basic Information

<b>Catalog Number:</b> CL555-66523	<b>GenBank Accession Number:</b> BC007566	<b>Purification Method:</b> Protein G purification
<b>Size:</b> 1000 µg/ml	<b>GeneID (NCBI):</b> 10226	<b>CloneNo.:</b> 4C11B1
<b>Source:</b> Mouse	<b>UNIPROT ID:</b> O60664	<b>Excitation/Emission maxima wavelengths:</b> 557 nm / 570nm
<b>Isotype:</b> IgG1	<b>Full Name:</b> mannose-6-phosphate receptor binding protein 1	
<b>Immunogen Catalog Number:</b> AG1028	<b>Calculated MW:</b> 47 kDa	
	<b>Observed MW:</b> 47 kDa	

## Applications

**Tested Applications:**  
FC (Intra)

**Species Specificity:**  
Human

## Background Information

Mannose 6-phosphate receptors (M6PRs) transport newly synthesized lysosomal hydrolases from the Golgi to prelysosomes and then return to the Golgi for another round of transport. M6PRBP1 (mannose-6-phosphate receptor binding protein 1), also known as TIP47, PLIN3 or PP17, interacts with the cytoplasmic domains of both cation-independent and cation-dependent M6PRs, and is required for endosome-to-Golgi transport. In addition to M6PR recycling, M6PRBP1 plays a role in lipid droplet biogenesis, and is also implicated in rhodopsin photobleaching and viral infection. M6PRBP1 has been found to be expressed in a variety of human tissues (including colon, liver and lung parenchyme, mammary gland, and skin) and is overexpressed in certain cancer cell lines. It binds to lipid droplets and also occurs in cytosol and on endosomal membranes.

## Storage

**Storage:**  
Store at -20°C. Avoid exposure to light. Stable for one year after shipment.

**Storage Buffer:**  
PBS with 50% Glycerol, 0.05% Proclin300, 0.5% BSA, pH 7.3.

Aliquoting is unnecessary for -20°C storage

For technical support and original validation data for this product please contact:

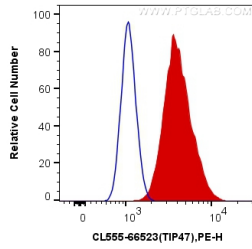
T: 4006900926

E: [Proteintech-CN@ptglab.com](mailto:Proteintech-CN@ptglab.com)

W: [ptgcn.com](http://ptgcn.com)

**This product is exclusively available under Proteintech Group brand and is not available to purchase from any other manufacturer.**

## Selected Validation Data



1X10<sup>6</sup> HeLa cells were intracellularly stained with 0.4 ug Coralite®555 Anti-Human TIP47 (CL555-66523, Clone:4C11B1) (red), or 0.4 ug Control Antibody. Cells were fixed with 4% PFA and permeabilized with Flow Cytometry Perm Buffer (PF00011-C).