

For Research Use Only

# CoraLite® Plus 555 Anti-Human CD5 (L17F12)



Catalog Number: CL555-65200

## Basic Information

**Catalog Number:**

CL555-65200

**Size:**

100 tests, 5 µl/test

**Source:**

Mouse

**Isotype:**

IgG2a, kappa

**GenBank Accession Number:**

BC027901

**GeneID (NCBI):**

921

**ENSEMBL Gene ID:**

ENSG00000110448

**UNIPROT ID:**

P06127

**Full Name:**

CD5 molecule

**Calculated MW:**

495 aa, 55 kDa

**Purification Method:**

Protein A purification

**CloneNo.:**

L17F12

**Excitation/Emission maxima  
wavelengths:**

554 nm / 570 nm

## Applications

**Tested Applications:**

FC

**Species Specificity:**

Human

## Background Information

CD5 is a type I transmembrane glycoprotein of the scavenger receptor cysteine-rich family (PMID: 12403363). CD5 is expressed on a majority of thymocytes, mature T cells, B cell subsets, and peripheral blood dendritic cells (PMID: 9858516; 6156984; 10379049; 1384337). CD5 may act as a receptor in regulating T-cell proliferation. It functions as a negative regulator of TCR signaling during thymocyte development (PMID: 7542801).

## Storage

**Storage:**

Store at 2-8°C. Avoid exposure to light. Stable for one year after shipment.

**Storage Buffer:**

PBS with 0.09% sodium azide and 0.5% BSA.

For technical support and original validation data for this product please contact:

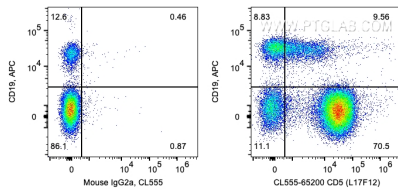
T: 4006900926

E: [Proteintech-CN@ptglab.com](mailto:Proteintech-CN@ptglab.com)

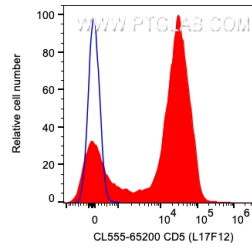
W: [ptgcn.com](http://ptgcn.com)

**This product is exclusively available under Proteintech Group brand and is not available to purchase from any other manufacturer.**

## Selected Validation Data



1X10<sup>6</sup> human PBMCs were surface co-stained with APC Anti-Human CD19 and 5 ul CoraLite® Plus 555 Anti-Human CD5 (CL555-65200, Clone:L17F12) or Mouse IgG2a Isotype Control. Cells were not fixed. Lymphocytes were gated.



1X10<sup>6</sup> human PBMCs were surface stained with 5 ul CoraLite® Plus 555 Anti-Human CD5 (CL555-65200, Clone:L17F12) (red) or Mouse IgG2a Isotype Control. Cells were not fixed. Lymphocytes were gated.