

# CoraLite® Plus 532-conjugated Cytokeratin 18 Monoclonal antibody

Catalog Number: **CL532-66187**

## Basic Information

**Catalog Number:**

CL532-66187

**Size:**

1000 µg/ml

**Source:**

Mouse

**Isotype:**

IgG1

**Immunogen Catalog Number:**

AG1260

**GenBank Accession Number:**

BC000180

**GeneID (NCBI):**

3875

**UNIPROT ID:**

P05783

**Full Name:**

keratin 18

**Calculated MW:**

48 kDa

**Observed MW:**

48 kDa

**Purification Method:**

Protein A purification

**CloneNo.:**

1G11C4

**Recommended Dilutions:**

IF 1:50-1:500

**Excitation/Emission maxima  
wavelengths:**

537 nm / 560 nm

## Applications

**Tested Applications:**

IF/ICC

**Species Specificity:**

human, mouse, rat

**Positive Controls:**

IF : HeLa cells,

## Background Information

Keratins are a large family of proteins that form the intermediate filament cytoskeleton of epithelial cells, which are classified into two major sequence types. Type I keratins are a group of acidic intermediate filament proteins, including K9-K23, and the hair keratins Ha1-Ha8. Type II keratins are the basic or neutral counterparts to the acidic type I keratins, including K1-K8, and the hair keratins, Hb1-Hb6. KRT18, also named as CYK18, PIG46 and K18, is the most commonly found members of the intermediate filament gene family. KRT18 is a type I keratin which is found primarily in non squamous epithelia and is present in a majority of adenocarcinomas and ductal carcinomas but not in squamous cell carcinomas.

## Storage

**Storage:**

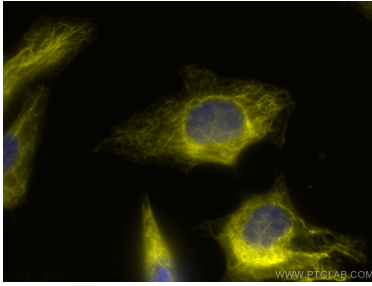
Store at -20°C. Avoid exposure to light. Stable for one year after shipment.

**Storage Buffer:**

PBS with 50% Glycerol, 0.05% Proclin300, 0.5% BSA, pH 7.3.

Aliquoting is unnecessary for -20°C storage

## Selected Validation Data



Immunofluorescent analysis of (-20°C Ethanol)  
fixed HeLa cells using CoraLite® Plus 532  
Cytokeratin 18 antibody (CL532-66187, Clone:  
1G11C4 ) at dilution of 1:200.