

For Research Use Only

CoraLite® Plus 488-conjugated NXF1 Monoclonal antibody



Catalog Number: CL488-67914

Basic Information

Catalog Number: CL488-67914	GenBank Accession Number: BC004904	Purification Method: Protein G purification
Size: 1000 µg/ml	GeneID (NCBI): 10482	CloneNo.: 2C2H1
Source: Mouse	UNIPROT ID: Q9UBU9	Recommended Dilutions: IF 1:50-1:500
Isotype: IgG1	Full Name: nuclear RNA export factor 1	Excitation/Emission maxima wavelengths: 493 nm / 522 nm
Immunogen Catalog Number: AG27329	Calculated MW: 70 kDa	
	Observed MW: 67 kDa	

Applications

Tested Applications: FC (Intra), IF/ICC	Positive Controls: IF : HEK-293 cells,
Species Specificity: Human	

Background Information

Nuclear RNA export factor 1 (NXF1, synonyms: TAP, MEX67) is one member of a family of nuclear RNA export factors. Common domain features of this family are a noncanonical RNP-type RNA-binding domain (RBD), 4 leucine-rich repeats (LRRs), a nuclear transport factor 2 (NTF2)-like domain that allows heterodimerization with NTF2-related export protein-1 (NXT1), and a ubiquitin-associated domain that mediates interactions with nucleoporins. The LRRs and NTF2-like domains are required for export activity. This protein shuttles between the nucleus and the cytoplasm and binds in vivo to poly(A)⁺ RNA. It is the vertebrate homologue of the yeast protein Mex67p. NXF1 overcomes the mRNA export block caused by the presence of saturating amounts of CTE (constitutive transport element) RNA of type D retroviruses.

Storage

Storage:
Store at -20°C. Avoid exposure to light. Stable for one year after shipment.
Storage Buffer:
PBS with 50% Glycerol, 0.05% Proclin300, 0.5% BSA, pH 7.3.
Aliquoting is unnecessary for -20°C storage

For technical support and original validation data for this product please contact:

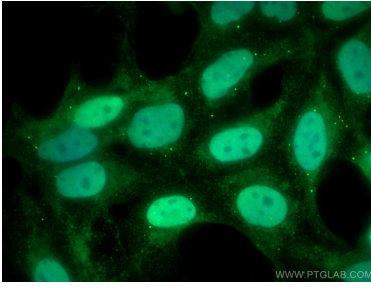
T: 4006900926

E: Proteintech-CN@ptglab.com

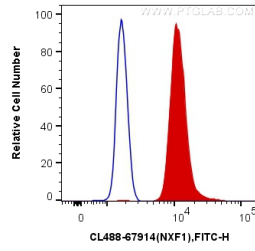
W: ptgcn.com

This product is exclusively available under Proteintech Group brand and is not available to purchase from any other manufacturer.

Selected Validation Data



Immunofluorescent analysis of (4% PFA) fixed HEK-293 cells using CoraLite® Plus 488 NXF1 antibody (CL488-67914, Clone: 2C2H1) at dilution of 1:200.



1X10⁶ HEK-293 cells were intracellularly stained with 0.4 ug CoraLite® Plus 488 Anti-Human NXF1 (CL488-67914, Clone:2C2H1) (red), or 0.4 ug Control Antibody. Cells were fixed and permeabilized with Transcription Factor Staining Buffer Kit (PF00011).