

For Research Use Only

CoraLite® Plus 488-conjugated RAB11A Monoclonal antibody



Catalog Number: CL488-67902

Basic Information

Catalog Number:

CL488-67902

Size:

1000 µg/ml

Source:

Mouse

Isotype:

IgG1

Immunogen Catalog Number:

AG8879

GenBank Accession Number:

BC013348

GeneID (NCBI):

8766

UNIPROT ID:

P62491

Full Name:

RAB11A, member RAS oncogene family

Calculated MW:

216 aa, 24 kDa

Observed MW:

24 kDa

Purification Method:

Protein G purification

CloneNo.:

4A4C9

Excitation/Emission maxima wavelengths:

493 nm / 522 nm

Applications

Tested Applications:

FC (Intra)

Species Specificity:

Human, mouse, rat, pig

Background Information

Rab11a, Rab11b and Rab25 comprise a subfamily of Rab proteins that belong to the Ras-related small GTPase protein superfamily (PMID: 8074219, PMID: 10708602). Rab11 proteins are involved in endocytosis and plasma membrane recycling in non-polarized and polarized cells (PMID: 8638719, PMID: 8922376). Rab11a and Rab11b are ubiquitously expressed in most tissues, while Rab25 is only expressed in epithelial cells. Rab11a is known to regulate the recycling of internalized cell surface proteins and receptors from the early endosome through the trans-Golgi network (PMID: 11121436, PMID: 9600939).

Storage

Storage:

Store at -20°C. Avoid exposure to light. Stable for one year after shipment.

Storage Buffer:

PBS with 50% Glycerol, 0.05% Proclin300, 0.5% BSA, pH 7.3.

Aliquoting is unnecessary for -20°C storage

For technical support and original validation data for this product please contact:

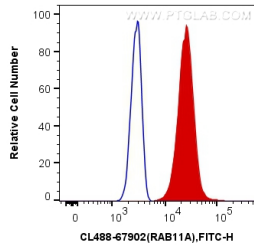
T: 4006900926

E: Proteintech-CN@ptglab.com

W: ptgcn.com

This product is exclusively available under Proteintech Group brand and is not available to purchase from any other manufacturer.

Selected Validation Data



1X10⁶ HeLa cells were intracellularly stained with 0.4 ug Coralite® Plus 488 Anti-Human RAB11A (CL488-67902, Clone:4A4C9) (red), or 0.4 ug Control Antibody. Cells were fixed with 4% PFA and permeabilized with Flow Cytometry Perm Buffer (PF00011-C).