

For Research Use Only

CoraLite® Plus 488-conjugated CCT5 Monoclonal antibody



Catalog Number: CL488-67400

Basic Information

Catalog Number:

CL488-67400

Size:

1000 µg/ml

Source:

Mouse

Isotype:

IgG1

Immunogen Catalog Number:

AG21421

GenBank Accession Number:

BC035499

GeneID (NCBI):

22948

UNIPROT ID:

P48643

Full Name:

chaperonin containing TCP1, subunit
5 (epsilon)

Calculated MW:

541 aa, 60 kDa

Observed MW:

60 kDa

Purification Method:

Protein G purification

CloneNo.:

1B12E10

Recommended Dilutions:

IF 1:50-1:500

Excitation/Emission maxima
wavelengths:

493 nm / 522 nm

Applications

Tested Applications:

FC (Intra), IF/ICC

Species Specificity:

Human, mouse, rat

Positive Controls:

IF : HepG2 cells,

Background Information

Storage

Storage:

Store at -20°C. Avoid exposure to light. Stable for one year after shipment.

Storage Buffer:

PBS with 50% Glycerol, 0.05% Proclin300, 0.5% BSA, pH 7.3.

Aliquoting is unnecessary for -20°C storage

For technical support and original validation data for this product please contact:

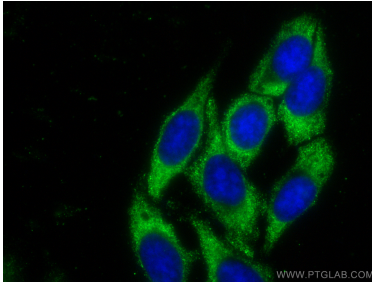
T: 4006900926

E: Proteintech-CN@ptglab.com

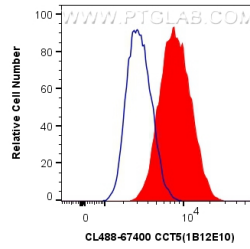
W: ptgcn.com

This product is exclusively available under Proteintech Group brand and is not available to purchase from any other manufacturer.

Selected Validation Data



Immunofluorescent analysis of (-20°C Ethanol) fixed HepG2 cells using CoraLite® Plus 488 CCT5 antibody (CL488-67400, Clone: 1B12E10) at dilution of 1:200.



1X10⁶ HepG2 cells were intracellularly stained with 0.8 ug CoraLite® Plus 488 Anti-Human CCT5 (CL488-67400, Clone:1B12E10) (red), or 0.8 ug CoraLite® Plus 488 Mouse IgG1 Isotype Control (MOPC-21) (CL488-65124, Clone: MOPC-21) (blue). Cells were fixed with 4% PFA and permeabilized with Flow Cytometry Perm Buffer (PF00011-C).