

# CoraLite® Plus 488-conjugated RASEF Monoclonal antibody

Catalog Number: **CL488-67159**

## Basic Information

|  |  |  |
|--|--|--|
| Catalog Number:<br><b>CL488-67159</b>      | GenBank Accession Number:<br><b>BC023566</b>           | Purification Method:<br><b>Protein A purification</b>                |
| Size:<br><b>1000 µg/ml</b>                 | GeneID (NCBI):<br><b>158158</b>                        | CloneNo.:<br><b>1C2B2</b>  |
| Source:<br><b>Mouse</b>                    | UNIPROT ID:<br><b>Q8IZ41</b>                           | Recommended Dilutions:<br><b>IF 1:50-1:500</b>                       |
| Isotype:<br><b>IgG2a</b>                   | Full Name:<br><b>RAS and EF-hand domain containing</b> | Excitation/Emission maxima<br>wavelengths:<br><b>493 nm / 522 nm</b> |
| Immunogen Catalog Number:<br><b>AG2149</b> | Calculated MW:<br><b>740 aa, 83 kDa</b>                |  |
|  | Observed MW:<br><b>90 kDa</b>                          |  |

## Applications

|                                       |   |
|---------------------------------------|---|
| Tested Applications:<br><b>IF/ICC</b> | Positive Controls:<br><b>IF : A431 cells,</b> |
| Species Specificity:<br><b>Human</b>  |   |

## Background Information

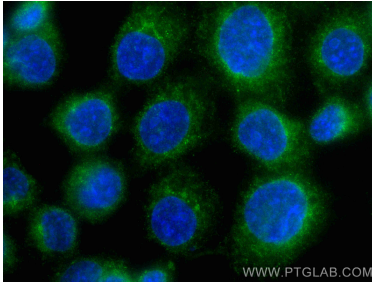
The RASEF (RAS and EF-hand domain-containing protein), a member of Rab GTPase protein family, contains a Rab GTPase domain in the C-terminal region, a coiled coil motif in an internal region as well as 2 EF hand domains which were of importance for binding to calcium ions in the N-terminus.

## Storage

**Storage:**  
Store at -20°C. Avoid exposure to light. Stable for one year after shipment.  
**Storage Buffer:**  
PBS with 50% Glycerol, 0.05% Proclin300, 0.5% BSA, pH 7.3.  
**Aliquoting is unnecessary for -20°C storage**

---

## Selected Validation Data



Immunofluorescent analysis of (-20°C Methanol) fixed A431 cells using CoraLite® Plus 488 RASEF antibody (CL488-67159, Clone: 1C2B2 ) at dilution of 1:200.