

For Research Use Only

CoraLite® Plus 488-conjugated CYP3A4 Monoclonal antibody



Catalog Number:CL488-67110

Basic Information

Catalog Number: CL488-67110	GenBank Accession Number: BC101631	Purification Method: Protein G purification
Size: 1000 µg/ml	GeneID (NCBI): 1576	CloneNo.: 2F11C4
Source: Mouse	UNIPROT ID: P08684	Recommended Dilutions: IF 1:50-1:500
Isotype: IgG1	Full Name: cytochrome P450, family 3, subfamily A, polypeptide 4	Excitation/Emission maxima wavelengths: 493 nm / 522 nm
Immunogen Catalog Number: AG13074	Calculated MW: 503 aa, 57 kDa	
	Observed MW: 51-57 kDa	

Applications

Tested Applications: FC (Intra), IF/ICC	Positive Controls: IF : HepG2 cells,
Species Specificity: Human, Mouse, Rat, Pig	

Background Information

Cytochrome P450 3A(CYP3A) belongs to the cytochrome P450 family and the enzymes constitute an important detoxification system that contributes to primary metabolism of more than half of all prescribed medications. CYP3A expression determines impairment of drug absorption and efficient systemic clearance in a tissue-specific manner (PMID:17975676). The murine homolog of human CYP3A4 is CYP3A11 (PMID: 19297428). The highest amounts of drug-metabolizing cytochromes P-450 are found in the liver and intestine, with lower amounts found in other organs, including the kidney, lung, and brain. LPS that has reached the circulation stimulates a TLR4-dependent mechanism in the periphery, evoking a reduction in Cyp3a11 expression and metabolism in the liver (PMID: 15878984).

Storage

Storage:
Store at -20°C. Avoid exposure to light. Stable for one year after shipment.
Storage Buffer:
PBS with 50% Glycerol, 0.05% Proclin300, 0.5% BSA, pH 7.3.
Aliquoting is unnecessary for -20°C storage

For technical support and original validation data for this product please contact:

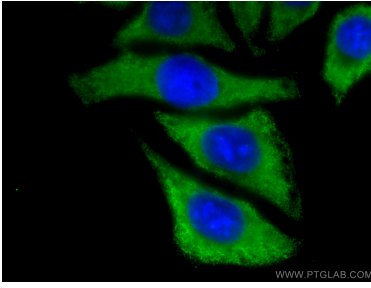
T: 4006900926

E: Proteintech-CN@ptglab.com

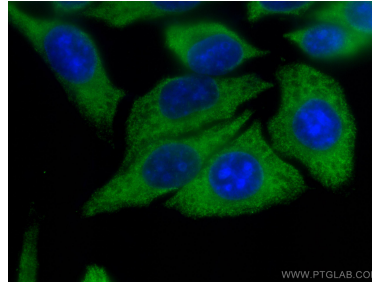
W: ptgcn.com

This product is exclusively available under Proteintech Group brand and is not available to purchase from any other manufacturer.

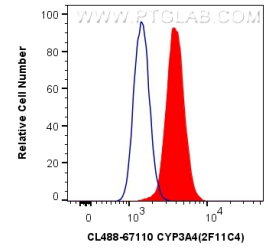
Selected Validation Data



Immunofluorescent analysis of (-20°C Methanol) fixed HepG2 cells using CoraLite® Plus 488 CYP3A4 antibody (CL488-67110, Clone: 2F11C4) at dilution of 1:200.



Immunofluorescent analysis of (-20°C Methanol) fixed HepG2 cells using CoraLite® Plus 488 CYP3A4 antibody (CL488-67110, Clone: 2F11C4) at dilution of 1:200.



1X10⁶ HepG2 cells were intracellularly stained with 0.4 ug CoraLite® Plus 488 Anti-Human CYP3A4 (CL488-67110, Clone:2F11C4) (red), or 0.4 ug Control Antibody. Cells were fixed with 4% PFA and permeabilized with Flow Cytometry Perm Buffer (PF00011-C).