

For Research Use Only

# CoraLite® Plus 488-conjugated ATG9A Monoclonal antibody



Catalog Number: CL488-67096

## Basic Information

Catalog Number:

CL488-67096

Size:

1000 µg/ml

Source:

Mouse

Isotype:

IgG1

Immunogen Catalog Number:

AG24278

GenBank Accession Number:

BC065534

GeneID (NCBI):

79065

UNIPROT ID:

Q7Z3C6

Full Name:

ATG9 autophagy related 9 homolog A  
(S. cerevisiae)

Calculated MW:

837 aa, 94 kDa

Observed MW:

94 kDa

Purification Method:

Protein G purification

CloneNo.:

1D12E11

Recommended Dilutions:

IF 1:50-1:500

Excitation/Emission maxima

wavelengths:

493 nm / 522 nm

## Applications

Tested Applications:

IF/ICC

Species Specificity:

Human

Positive Controls:

IF : HeLa cells, HepG2 cells

## Background Information

ATG9A is the only transmembrane ATG protein essential for autophagy. It plays a key role in the organization of the preautophagosomal structure/phagophore assembly site (PAS). It has been reported that ATG9A expression is increased in oral squamous cell carcinoma and breast cancers. The inhibition of ATG9A can lead to an inhibition of cancer cell proliferation and invasion. (PMID: 29437695, 29568063)

## Storage

Storage:

Store at -20°C. Avoid exposure to light. Stable for one year after shipment.

Storage Buffer:

PBS with 50% Glycerol, 0.05% Proclin300, 0.5% BSA, pH 7.3.

Aliquoting is unnecessary for -20°C storage

For technical support and original validation data for this product please contact:

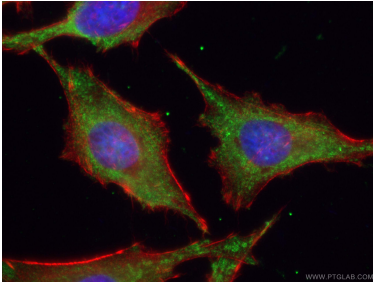
T: 4006900926

E: [Proteintech-CN@ptglab.com](mailto:Proteintech-CN@ptglab.com)

W: [ptgcn.com](http://ptgcn.com)

**This product is exclusively available under Proteintech Group brand and is not available to purchase from any other manufacturer.**

## Selected Validation Data



Immunofluorescent analysis of (-20°C Ethanol) fixed HeLa cells using CoraLite® Plus 488-conjugated ATG9A antibody (CL488-67096, Clone: 1D12E11) at dilution of 1:200, CL594-Phalloidin (red).