

For Research Use Only

CoraLite® Plus 488-conjugated FBL Monoclonal antibody



Catalog Number:CL488-66985

Basic Information

Catalog Number: CL488-66985	GenBank Accession Number: BC019260	Purification Method: Protein G purification
Size: 1000 µg/ml	GeneID (NCBI): 2091	CloneNo.: 3A9E8
Source: Mouse	UNIPROT ID: P22087	Recommended Dilutions: IF 1:50-1:500
Isotype: IgG1	Full Name: fibrillarin	Excitation/Emission maxima wavelengths: 493 nm / 522 nm
Immunogen Catalog Number: AG8841	Calculated MW: 321 aa, 34 kDa	
	Observed MW: 34 kDa	

Applications

Tested Applications: FC (Intra), IF/ICC	Positive Controls: IF : HeLa cells, HepG2 cells
Species Specificity: Human, rat, mouse	

Background Information

Fibrillarin (Fbl) is an essential nucleolar protein that plays an essential role in ribosome biogenesis and more particularly in the methylation of ribosomal RNAs and rDNA histones. FBL is highly expressed in various cancers and correlates with poor survival outcomes in cancer patients, such as hepatocellular carcinoma (PMID: 33376525). Knockdown of FBL sensitizes tumor cells and xenografts to DNA crosslinking agents, and leads to homologous recombination-mediated DNA repair defects (PMID: 37489617).

Storage

Storage:
Store at -20°C. Avoid exposure to light. Stable for one year after shipment.
Storage Buffer:
PBS with 50% Glycerol, 0.05% Proclin300, 0.5% BSA, pH 7.3.
Aliquoting is unnecessary for -20°C storage

For technical support and original validation data for this product please contact:

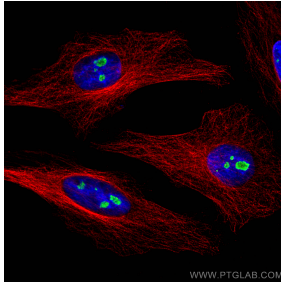
T: 4006900926

E: Proteintech-CN@ptglab.com

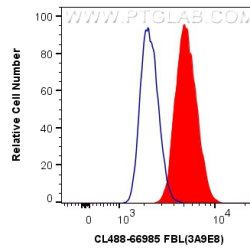
W: ptgcn.com

This product is exclusively available under Proteintech Group brand and is not available to purchase from any other manufacturer.

Selected Validation Data



Immunofluorescent analysis of (4% PFA) fixed HeLa cells using CoraLite® Plus 488 FBL antibody (CL488-66985, Clone: 3A9E8) at dilution of 1:200, Alpha Tubulin antibody (11224-1-AP, red).



1X10⁶ HepG2 cells were intracellularly stained with 0.8 ug CoraLite® Plus 488 Anti-Human FBL (CL488-66985, Clone:3A9E8) (red), or 0.8 ug CoraLite® Plus 488 Mouse IgG1 Isotype Control (MOPC-21) (CL488-65124, Clone: MOPC-21) (blue). Cells were fixed and permeabilized with Transcription Factor Staining Buffer Kit (PF00011).