

For Research Use Only

CoraLite® Plus 488-conjugated PSMA/GCPII Monoclonal antibody



Catalog Number:CL488-66678

Basic Information

Catalog Number:

CL488-66678

Size:

1000 µg/ml

Source:

Mouse

Isotype:

IgG1

Immunogen Catalog Number:

AG16594

GenBank Accession Number:

BC025672

GeneID (NCBI):

2346

UNIPROT ID:

Q04609

Full Name:

folate hydrolase (prostate-specific membrane antigen) 1

Calculated MW:

719 aa, 81 kDa

Observed MW:

100-120 kDa

Purification Method:

Protein G purification

CloneNo.:

3G4E12

Recommended Dilutions:

IF 1:50-1:500

Excitation/Emission maxima wavelengths:

493 nm / 522 nm

Applications

Tested Applications:

IF/ICC,IF-P

Species Specificity:

Human, Rat

Positive Controls:

IF : PC-3 cells, human prostate cancer tissue

Background Information

PSMA (Prostate-specific membrane antigen) is also named as FOLH1, FOLH, NAALAD1, PSM and belongs to the peptidase M28 family. PSMA is a 100-120 kDa integral transmembrane glycoprotein, considered to be a highly specific marker of the prostate gland, and has successfully been used as a marker of circulating prostatic epithelial cells (PMID:10074909; 15680901). It is involved in conversion of the major neurotransmitter (NAA) to NAA and free glutamate. It has 8 isoforms produced by alternative splicing.

Storage

Storage:

Store at -20°C. Avoid exposure to light. Stable for one year after shipment.

Storage Buffer:

PBS with 50% Glycerol, 0.05% Proclin300, 0.5% BSA, pH 7.3.

Aliquoting is unnecessary for -20°C storage

For technical support and original validation data for this product please contact:

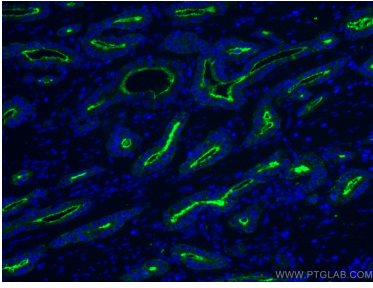
T: 4006900926

E: Proteintech-CN@ptglab.com

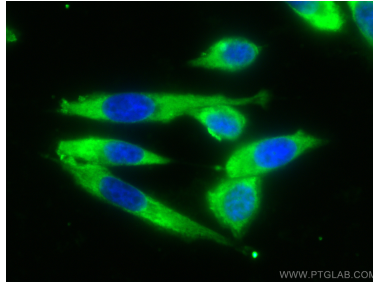
W: ptgcn.com

This product is exclusively available under Proteintech Group brand and is not available to purchase from any other manufacturer.

Selected Validation Data



Immunofluorescent analysis of (4% PFA) fixed human prostate cancer tissue using CoraLite® Plus 488 PSMA/GCPII antibody (CL488-66678, Clone: 3G4E12) at dilution of 1:200.



Immunofluorescent analysis of (-20°C Ethanol) fixed PC-3 cells using CoraLite® Plus 488 PSMA/GCPII antibody (CL488-66678, Clone: 3G4E12) at dilution of 1:100.