

For Research Use Only

CoraLite® Plus 488-conjugated EPHA7 Monoclonal antibody



Catalog Number:CL488-66667

Basic Information

Catalog Number:

CL488-66667

Size:

1000 µg/ml

Source:

Mouse

Isotype:

IgG1

Immunogen Catalog Number:

AG3813

GenBank Accession Number:

BC027940

GeneID (NCBI):

2045

UNIPROT ID:

Q15375

Full Name:

EPH receptor A7

Calculated MW:

998 aa, 112 kDa

Observed MW:

120 kDa

Purification Method:

Protein G purification

CloneNo.:

1A7E5

Excitation/Emission maxima
wavelengths:

493 nm / 522 nm

Applications

Tested Applications:

FC (Intra)

Species Specificity:

Human, Mouse, Rat, Pig

Background Information

Ephrin receptor A7 (EphA7) is a member of the Eph receptor family. EPHA7 plays a role in corticogenesis processes, determines brain size and shape, and is involved in development of the central nervous system (PMID:34176129). In addition, EphA7 also has a dual role of tumor promoter and tumor suppressor. It can participate in cell proliferation, migration and apoptosis through various mechanisms, and affect tumor differentiation, staging and prognosis. EphA7 may be a potential diagnostic marker and tumor treatment target (PMID:35112312).

Storage

Storage:

Store at -20°C. Avoid exposure to light. Stable for one year after shipment.

Storage Buffer:

PBS with 50% Glycerol, 0.05% Proclin300, 0.5% BSA, pH 7.3.

Aliquoting is unnecessary for -20°C storage

For technical support and original validation data for this product please contact:

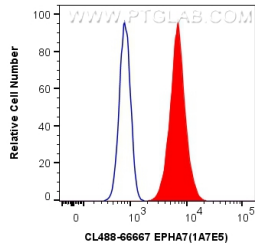
T: 4006900926

E: Proteintech-CN@ptglab.com

W: ptgcn.com

This product is exclusively available under Proteintech Group brand and is not available to purchase from any other manufacturer.

Selected Validation Data



1X10⁶ SH-SY5Y cells were intracellularly stained with 0.4 ug CoraLite® Plus 488 Anti-Human EPHA7 (CL488-66667, Clone:1A7E5) (red), or 0.4 ug Control Antibody. Cells were fixed with 4% PFA and permeabilized with Flow Cytometry Perm Buffer (PF00011-C).