

CoraLite® Plus 488-conjugated SDHA Monoclonal antibody

Catalog Number: **CL488-66588**

Basic Information

Catalog Number: CL488-66588	GenBank Accession Number: BC001380	Purification Method: Protein G purification
Size: 810 µg/ml	GeneID (NCBI): 6389	CloneNo.: 5E10G12
Source: Mouse	UNIPROT ID: P31040	Recommended Dilutions: IF/ICC 1:50-1:500
Isotype: IgG1	Full Name: succinate dehydrogenase complex, subunit A, flavoprotein (Fp)	Excitation/Emission maxima wavelengths: 493 nm / 522 nm
Immunogen Catalog Number: AG7023	Calculated MW: 73 kDa	
	Observed MW: 62-73 kDa	

Applications

Tested Applications: IF/ICC, FC (Intra)	Positive Controls: IF/ICC : HepG2 cells,
Species Specificity: human, mouse, rat	

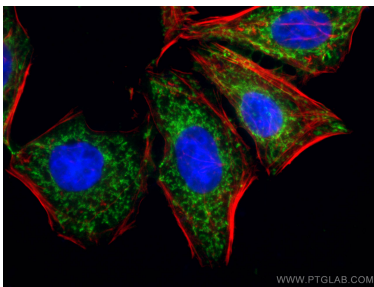
Background Information

SDHA, also named as SDH2, SDHF and Fp, belongs to the FAD-dependent oxidoreductase 2 family and FRD/SDH subfamily. SDHA is the flavoprotein subunit of succinate dehydrogenase (SDH) that is involved in complex II of the mitochondrial electron transport chain and is responsible for transferring electrons from succinate to ubiquinone (coenzyme Q). SDHA has 3 isoforms with the molecular mass of 73, 67 and 57 kDa, and the N-terminal (~5 kDa) can be removed in mature form. It can be detected a band of 68 kDa in cutaneous melanoma(PMID:21698147). SDHA may act as a tumor suppressor.

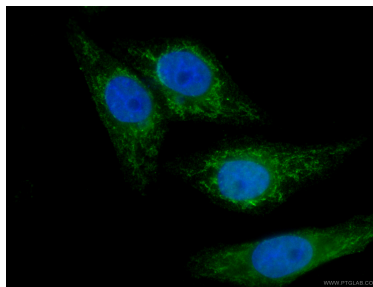
Storage

Storage:
Store at -20°C. Avoid exposure to light. Stable for one year after shipment.
Storage Buffer:
PBS with 50% Glycerol, 0.05% Proclin300, 0.5% BSA, pH 7.3.
Aliquoting is unnecessary for -20°C storage

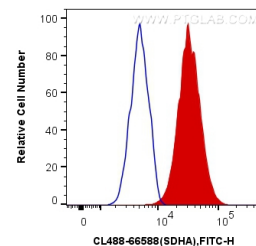
Selected Validation Data



Immunofluorescent analysis of (4% PFA) fixed HepG2 cells using CoraLite® Plus 488-conjugated SDHA antibody (CL488-66588, Clone: 5E10G12) at dilution of 1:100. Red: CL594-Phalloidin stains F-Actin; Blue: DAPI.



Immunofluorescent analysis of (4% PFA) fixed HepG2 cells using CL488-66588 (SDHA antibody) at dilution of 1:100.



1X10⁶ HeLa cells were intracellularly stained with 0.4 ug CoraLite® Plus 488 Anti-Human SDHA (CL488-66588, Clone:5E10G12) (red), or 0.4 ug Control Antibody. Cells were fixed with 4% PFA and permeabilized with Flow Cytometry Perm Buffer (PF00011-C).