

For Research Use Only

CoraLite® Plus 488-conjugated WWTR1 Monoclonal antibody



Catalog Number: CL488-66500

Featured Product

Basic Information

Catalog Number:

CL488-66500

Size:

1000 µg/ml

Source:

Mouse

Isotype:

IgG1

Immunogen Catalog Number:

AG13330

GenBank Accession Number:

BC014052

GeneID (NCBI):

25937

UNIPROT ID:

Q9GZV5

Full Name:

WW domain containing transcription

regulator 1

Calculated MW:

44 kDa

Observed MW:

55 kDa

Purification Method:

Protein G purification

CloneNo.:

2A12A10

Recommended Dilutions:

WB 1:500-1:2000

IF 1:50-1:500

Excitation/Emission maxima

wavelengths:

493 nm / 522 nm

Applications

Tested Applications:

IF-P, WB

Species Specificity:

Human, rat, mouse

Positive Controls:

WB : A549 cells, HeLa cells, HepG2 cells, MDA-MB-231 cells

IF : human liver cancer tissue,

Background Information

TAZ, also referred as WWTR1, is a transcriptional co-activator with a PDZ-binding motif that is regulated by its interaction with 14-3-3 protein. TAZ is expressed in many primary tumors, such as breast cancer, thyroid carcinoma, colorectal cancer, and glioma. TAZ has been reported to be one of the nuclear effectors of Hippo-related pathways that regulate organ size control, cancer stem cell (CSC) properties, and epithelial-mesenchymal transition (EMT). TAZ has been defined for its role in the nucleus, where it functions directly as a transcriptional regulator by interacting with several nuclear factors as Runx2/Cbfa1, NHERF-2, TEF-1, TBX5, PAX3, PAX8 and TTF-1.

Storage

Storage:

Store at -20°C. Avoid exposure to light. Stable for one year after shipment.

Storage Buffer:

PBS with 50% Glycerol, 0.05% Proclin300, 0.5% BSA, pH 7.3.

Aliquoting is unnecessary for -20°C storage

For technical support and original validation data for this product please contact:

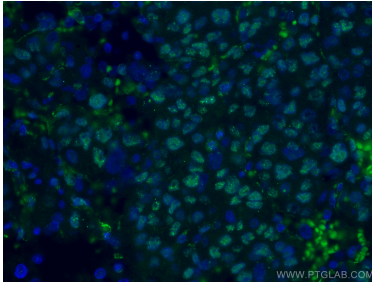
T: 4006900926

E: Proteintech-CN@ptglab.com

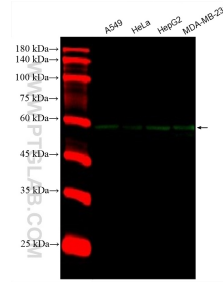
W: ptgcn.com

This product is exclusively available under Proteintech Group brand and is not available to purchase from any other manufacturer.

Selected Validation Data



Immunofluorescent analysis of (4% PFA) fixed human liver cancer tissue using CoraLite® Plus 488 TAZ antibody (CL488-66500, Clone: 2A12A10) at dilution of 1:200.



Various lysates were subjected to SDS PAGE followed by western blot with CL488-66500 (WWTR1 antibody) at dilution of 1:1000 incubated at room temperature for 1.5 hours.