

For Research Use Only

CoraLite® Plus 488-conjugated IgM Monoclonal antibody



Catalog Number: CL488-66484

2 Publications

Basic Information

Catalog Number:

CL488-66484

Size:

1000 µg/ml

Source:

Mouse

Isotype:

IgG1

Immunogen Catalog Number:

AG1459

GenBank Accession Number:

BC009851

GeneID (NCBI):

3507

Full Name:

immunoglobulin heavy constant mu

Calculated MW:

69 kDa

Observed MW:

75 kDa

Purification Method:

Protein G purification

CloneNo.:

2D10B10

Recommended Dilutions:

IF 1:50-1:500

Excitation/Emission maxima
wavelengths:

493 nm / 522 nm

Applications

Tested Applications:

IF/ICC, IF-P

Cited Applications:

IF, WB

Species Specificity:

Human

Cited Species:

human

Positive Controls:

IF : human tonsillitis tissue,

Background Information

Notable Publications

Author	Pubmed ID	Journal	Application
Burenbatu Burenbatu	33140498	Rapid Commun Mass Spectrom	WB
Jing Fa	34025791	Oncol Lett	IF

Storage

Storage:

Store at -20°C. Avoid exposure to light. Stable for one year after shipment.

Storage Buffer:

PBS with 50% Glycerol, 0.05% Proclin300, 0.5% BSA, pH 7.3.

Aliquoting is unnecessary for -20°C storage

For technical support and original validation data for this product please contact:

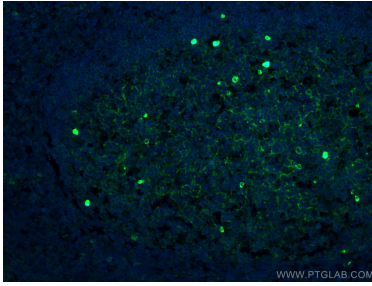
T: 4006900926

E: Proteintech-CN@ptglab.com

W: ptgcn.com

This product is exclusively available under Proteintech Group brand and is not available to purchase from any other manufacturer.

Selected Validation Data



Immunofluorescent analysis of (4% PFA) fixed human tonsillitis tissue using CoraLite® Plus 488-conjugated human IgM antibody (CL488-66484, Clone: 2D10B10) at dilution of 1:100.