

For Research Use Only

# CoraLite® Plus 488-conjugated 14-3-3 Sigma Monoclonal antibody



Catalog Number: CL488-66251

## Basic Information

Catalog Number:

CL488-66251

Size:

1000 µg/ml

Source:

Mouse

Isotype:

IgG1

Immunogen Catalog Number:

AG12644

GenBank Accession Number:

BC002995

GeneID (NCBI):

2810

UNIPROT ID:

P31947

Full Name:

stratifin

Calculated MW:

28 kDa

Observed MW:

28-30 kDa

Purification Method:

Protein G purification

CloneNo.:

3F10D9

Recommended Dilutions:

IF 1:50-1:500

Excitation/Emission maxima

wavelengths:

493 nm / 522 nm

## Applications

Tested Applications:

FC (Intra), IF/ICC

Species Specificity:

human

Positive Controls:

IF : MCF-7 cells,

## Background Information

14-3-3 Sigma is a member 14-3-3 family of highly conserved proteins participating in diverse cellular processes including cell cycle progression. It is exclusively present in various epithelial cells, and alternatively named as human epithelial marker (HEM), or stratifin. Alteration of its expression has been linked to cancer.

## Storage

Storage:

Store at -20°C. Avoid exposure to light.

Storage Buffer:

PBS with 50% Glycerol, 0.05% Proclin300, 0.5% BSA, pH 7.3.

Aliquoting is unnecessary for -20°C storage

For technical support and original validation data for this product please contact:

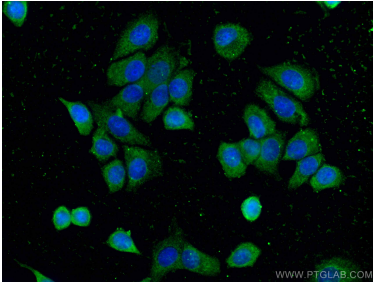
T: 4006900926

E: [Proteintech-CN@ptglab.com](mailto:Proteintech-CN@ptglab.com)

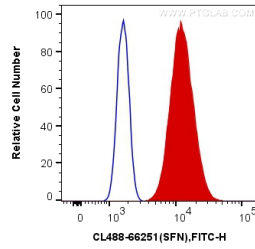
W: [ptgcn.com](http://ptgcn.com)

This product is exclusively available under Proteintech Group brand and is not available to purchase from any other manufacturer.

## Selected Validation Data



Immunofluorescent analysis of (-20°C Ethanol) fixed MCF-7 cells using CoraLite® Plus 488 14-3-3 Sigma antibody (CL488-66251, Clone: 3F10D9) at dilution of 1:100.



1X10<sup>6</sup> A431 cells were intracellularly stained with 0.2 ug CoraLite® Plus 488 Anti-Human 14-3-3 Sigma (CL488-66251, Clone:3F10D9) (red), or 0.2 ug Mouse IgG1 Isotype Control (CL488-66360, Clone: T1F8D3F10) (blue). Cells were fixed with 4% PFA and permeabilized with Flow Cytometry Perm Buffer (PF00011-C).