

For Research Use Only

CoraLite® Plus 488-conjugated Arginase-1 Monoclonal antibody



Catalog Number: CL488-66129

2 Publications

Basic Information

Catalog Number: CL488-66129	GenBank Accession Number: BC005321	Purification Method: Protein G purification
Size: 1000 µg/ml	GeneID (NCBI): 383	CloneNo.: 5D6D12
Source: Mouse	UNIPROT ID: P05089	Recommended Dilutions: IF 1:50-1:500
Isotype: IgG1	Full Name: arginase, liver	Excitation/Emission maxima wavelengths: 493 nm / 522 nm
Immunogen Catalog Number: AG8810	Calculated MW: 236aa,25 kDa; 322aa,35 kDa	

Applications

Tested Applications: IF/ICC	Positive Controls: IF : HepG2 cells, HeLa cells
Cited Applications: IF	
Species Specificity: human, pig, rat, mouse	
Cited Species: mouse	

Background Information

Arginase-1 (Liver arginase) belongs to the arginase family. ARG1 is a novel immunohistochemical marker of hepatocellular differentiation in fine needle aspiration cytology and a marker of hepatocytes and hepatocellular neoplasms. ARG1 is closely associated with alternative macrophage activation (PMID:12098359) and ARG1 has been shown to protect motor neurons from trophic factor deprivation and allow sensory neurons to overcome neurite outgrowth inhibition by myelin proteins (PMID: 20071539). It can exist as a homotrimer (PMID:16141327) and it has 3 isoforms produced by alternative splicing. Defects in ARG1 are the cause of argininemia (ARGIN). Deletion or TNF-mediated restriction of ARG1 unleashes the production of NO by NOS2, which is critical for pathogen control. (PMID:27117406). ARG1 is a novel biomarker of post-stroke immune suppression (2016). The antibody is conjugated with CL488, Ex/Em 488 nm/515 nm.

Notable Publications

Author	Pubmed ID	Journal	Application
Kirsten M Reeves	34615724	Clin Cancer Res	IF
Weihao Shi	33969376	Biosci Rep	IF

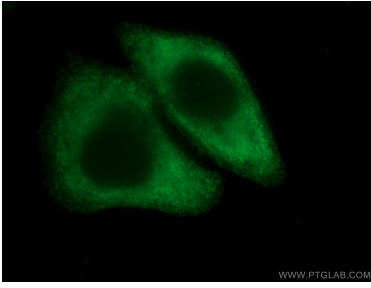
Storage

Storage:
Store at -20°C. Avoid exposure to light. Stable for one year after shipment.
Storage Buffer:
PBS with 50% Glycerol, 0.05% Proclin300, 0.5% BSA, pH 7.3.
Aliquoting is unnecessary for -20°C storage

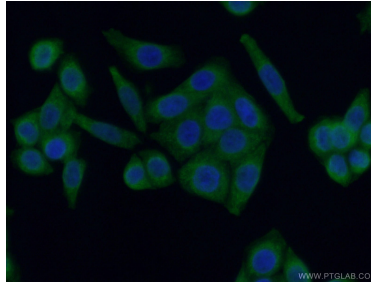
For technical support and original validation data for this product please contact:
T: 4006900926 E: Proteintech-CN@ptglab.com W: ptgcn.com

This product is exclusively available under Proteintech Group brand and is not available to purchase from any other manufacturer.

Selected Validation Data



Immunofluorescent analysis of (-20°C Ethanol) fixed HepG2 cells using CL488-66129 (ARG1 antibody) at dilution of 1:50.



Immunofluorescent analysis of (-20°C Ethanol) fixed HeLa cells using CL488-66129 (ARG1 antibody) at dilution of 1:50.