

For Research Use Only

CoraLite® Plus 488 Anti-Mouse CD107b / LAMP2 (ABL-93)



Catalog Number: CL488-65052

Basic Information

Catalog Number: CL488-65052	GenBank Accession Number: BC138718	Purification Method: Affinity purification
Size: 100tests, 5 µl/test	GeneID (NCBI): 16784	CloneNo.: ABL-93
Source: Rat	UNIPROT ID: P17047	Recommended Dilutions: IF 1:50-1:500
Isotype: IgG2a, kappa	Full Name: lysosomal-associated membrane protein 2	Excitation/Emission maxima wavelengths: 493 nm / 522 nm

Applications

Tested Applications: FC (Intra), IF/ICC	Positive Controls: IF : NIH/3T3 cells,
Species Specificity: Mouse	

Background Information

LAMP2 (CD107b) is a Lysosomal membrane glycoprotein. LAMP2 is extensively glycosylated with asparagine-linked oligosaccharides which protect it from intracellular proteolysis (PMID: 10521503). Although LAMP-2 is localized primarily in the endosome-lysosomal membrane of cells, it is also found on the plasma membrane under certain circumstances, e.g., after platelet activation, during granulocytic differentiation and activation, and in some tumor cells (PMID: 12221139). LAMP is involved in lysosomal stability and autophagy (PMID: 12221139). This glycoprotein provides selectins with carbohydrate ligands. LAMP2 may play a role in tumor cell metastasis (PMID 9426697).

Storage

Storage:
Store at 2-8°C. Avoid exposure to light. Stable for one year after shipment.
Storage Buffer:
PBS with 0.1% sodium azide and 0.5% BSA, pH 7.3.

For technical support and original validation data for this product please contact:

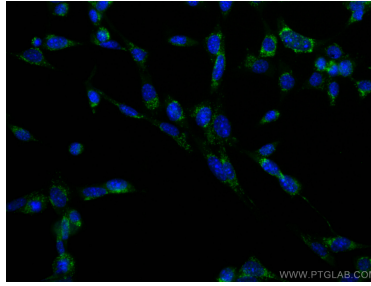
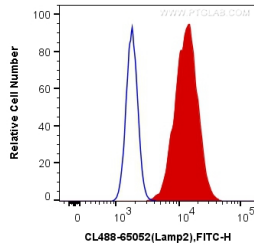
T: 4006900926

E: Proteintech-CN@ptglab.com

W: ptgcn.com

This product is exclusively available under Proteintech Group brand and is not available to purchase from any other manufacturer.

Selected Validation Data



1X10⁶ NIH/3T3 cells were intracellularly stained with 5 μ l CoraLite[®] Plus 488 Anti-Mouse CD107b (CL488-65052, Clone:ABL-93) (red), or Control Antibody. Cells were fixed with 4% PFA and permeabilized with Intracellular Staining Permeabilization Wash Buffer.

Immunofluorescent analysis of (-20°C Ethanol) fixed NIH/3T3 cells using CoraLite[®] Plus 488 CD107b antibody (CL488-65052, Clone: ABL-93) at dilution of 1:400.