

For Research Use Only

CoraLite® Plus 488-conjugated HER2/ErbB2 Monoclonal antibody



Catalog Number: CL488-60311

Basic Information

Catalog Number:

CL488-60311

Size:

1000 µg/ml

Source:

Mouse

Isotype:

IgG2b

Immunogen Catalog Number:

AG16463

GenBank Accession Number:

BC156755

GeneID (NCBI):

2064

UNIPROT ID:

P04626

Full Name:

v-erb-b2 erythroblastic leukemia
viral oncogene homolog 2,
neuro/glioblastoma derived
oncogene homolog (avian)

Calculated MW:

1255 aa, 138 kDa

Purification Method:

Protein A purification

CloneNo.:

1B12A7

Recommended Dilutions:

IF 1:50-1:500

Excitation/Emission maxima
wavelengths:

493 nm / 522 nm

Applications

Tested Applications:

FC, IF-P

Species Specificity:

human

Positive Controls:

IF : human breast cancer tissue,

Background Information

HER2, also known as ErbB2 and Neu, is a 185-kDa transmembrane glycoprotein that is a member of the epidermal growth factor (EGF) receptor family of receptor tyrosine kinases. It has no ligand binding domain of its own and therefore cannot bind growth factors. However, it does bind tightly to other ligand-bound EGF receptor family members to form a heterodimer, stabilizing ligand binding and enhancing kinase-mediated activation of downstream signalling pathways, such as those involving mitogen-activated protein kinase and phosphatidylinositol-3 kinase. Amplification and/or overexpression of HER2 have been reported in numerous cancers, including breast and ovarian tumors. HER2 is a therapeutic target for the treatment of breast cancer and other carcinomas.

Storage

Storage:

Store at -20°C. Avoid exposure to light. Stable for one year after shipment.

Storage Buffer:

PBS with 50% Glycerol, 0.05% Proclin300, 0.5% BSA, pH 7.3.

Aliquoting is unnecessary for -20°C storage

For technical support and original validation data for this product please contact:

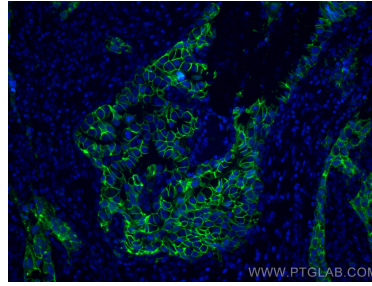
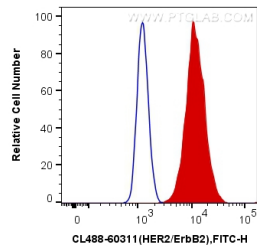
T: 4006900926

E: Proteintech-CN@ptglab.com

W: ptgcn.com

This product is exclusively available under Proteintech Group brand and is not available to purchase from any other manufacturer.

Selected Validation Data



1X10⁶ SK-BR-3 cells were surface stained with 0.4 ug CoraLite® Plus 488 Anti-Human HER2/ ErbB2 (CL488-60311, Clone:1B12A7) (red), or 0.4 ug Mouse IgG2b Isotype Control (CL488-66360-3, Clone: K11B8C4B5) (blue). Cells were not fixed.

Immunofluorescent analysis of (4% PFA) fixed human breast cancer tissue using CoraLite® Plus 488 HER2/ErbB2 antibody (CL488-60311, Clone: 1B12A7) at dilution of 1:200.