

For Research Use Only

# CoraLite® Plus 488-conjugated smooth muscle actin specific Polyclonal antibody



Catalog Number: **CL488-55135**

## Basic Information

<b>Catalog Number:</b> CL488-55135	<b>GenBank Accession Number:</b> NM_001613	<b>Purification Method:</b> Antigen affinity purification
<b>Size:</b> 1000 µg/ml	<b>GeneID (NCBI):</b> 59	<b>Recommended Dilutions:</b> IF 1:50-1:500
<b>Source:</b> Rabbit	<b>UNIPROT ID:</b> P62736	<b>Excitation/Emission maxima wavelengths:</b> 493 nm / 522 nm
<b>Isotype:</b> IgG	<b>Full Name:</b> actin, alpha 2, smooth muscle, aorta	
	<b>Calculated MW:</b> 42 kDa	
	<b>Observed MW:</b> 42 kDa	

## Applications

**Tested Applications:**  
IF-P

**Species Specificity:**  
human, mouse, rat

**This antibody is recommended for use in IHC.**

**Positive Controls:**

IF : mouse heart tissue, mouse spleen tissue

## Background Information

ACTA2, also named as a-SMA, AAT6; ACTSA belongs to the actin family. Actins are highly conserved proteins that are involved in various types of cell motility and are ubiquitously expressed in all eukaryotic cells. Defects in ACTA2 are the cause of aortic aneurysm familial thoracic type 6 (AAT6). The immunogen of this antibody is a specific domain of ACTA2. This antibody stains the aorta only.

## Storage

**Storage:**

Store at -20°C. Avoid exposure to light. Stable for one year after shipment.

**Storage Buffer:**

PBS with 50% Glycerol, 0.05% Proclin300, 0.5% BSA, pH 7.3.

Aliquoting is unnecessary for -20°C storage

For technical support and original validation data for this product please contact:

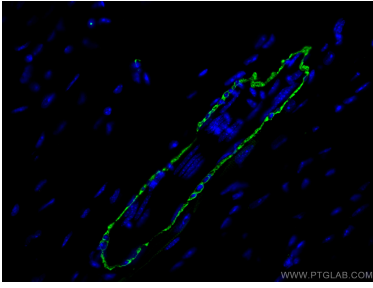
T: 4006900926

E: [Proteintech-CN@ptglab.com](mailto:Proteintech-CN@ptglab.com)

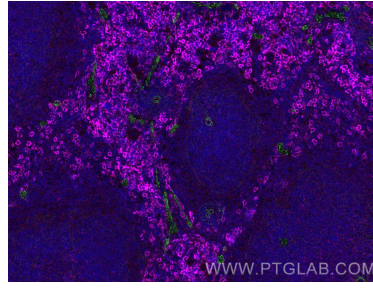
W: [ptgcn.com](http://ptgcn.com)

**This product is exclusively available under Proteintech Group brand and is not available to purchase from any other manufacturer.**

## Selected Validation Data



Immunofluorescent analysis of (4% PFA) fixed mouse heart tissue using CoraLite® Plus 488 smooth muscle actin-specific antibody (CL488-55135) at dilution of 1:200.



Immunofluorescent analysis of (4% PFA) fixed mouse spleen tissue using CoraLite® Plus 488 smooth muscle actin specific antibody (CL488-55135) at dilution of 1:200, F4/80 antibody (28463-1-AP, Magenta).