

For Research Use Only

# CoraLite® Plus 488-conjugated AMH Polyclonal antibody



Catalog Number: CL488-23479

## Basic Information

<b>Catalog Number:</b> CL488-23479	<b>GenBank Accession Number:</b> BC049194	<b>Purification Method:</b> Antigen affinity purification
<b>Size:</b> 1000 µg/ml	<b>GeneID (NCBI):</b> 268	<b>Recommended Dilutions:</b> IF 1:50-1:500
<b>Source:</b> Rabbit	<b>UNIPROT ID:</b> P03971	<b>Excitation/Emission maxima wavelengths:</b> 493 nm / 522 nm
<b>Isotype:</b> IgG	<b>Full Name:</b> anti-Mullerian hormone	
<b>Immunogen Catalog Number:</b> AG20166	<b>Calculated MW:</b> 59 kDa	

## Applications

<b>Tested Applications:</b> IF-P	<b>Positive Controls:</b> IF : mouse ovary tissue,
<b>Species Specificity:</b> human, rat, mouse	

## Background Information

Anti-Müllerian hormone (AMH), also called Müllerian-inhibiting substance (MIS), is a dimeric glycoprotein and a member of the TGF- $\beta$  family. AMH, produced by the Sertoli cells of the fetal testis, induces the regression of the Müllerian ducts, the anlagen of the female reproductive tract. However, after birth, this sex-dimorphic expression pattern is lost and AMH is also expressed in granulosa cells of growing follicles in the ovary. More recently, AMH has been studied for its role in ovarian folliculogenesis and as a potential marker of ovarian reserve.

## Storage

**Storage:**  
Store at -20°C. Avoid exposure to light. Stable for one year after shipment.  
**Storage Buffer:**  
PBS with 50% Glycerol, 0.05% Proclin300, 0.5% BSA, pH 7.3.  
Aliquoting is unnecessary for -20°C storage

For technical support and original validation data for this product please contact:

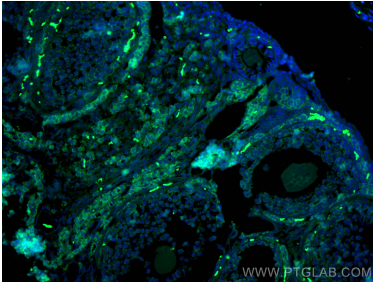
T: 4006900926

E: [Proteintech-CN@ptglab.com](mailto:Proteintech-CN@ptglab.com)

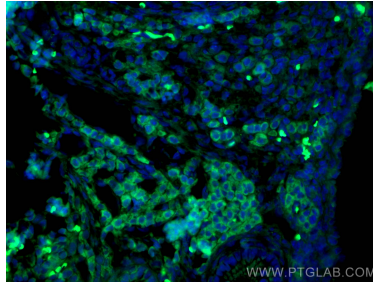
W: [ptgcn.com](http://ptgcn.com)

This product is exclusively available under Proteintech Group brand and is not available to purchase from any other manufacturer.

## Selected Validation Data



Immunofluorescent analysis of (4% PFA) fixed mouse ovary tissue using CoraLite® Plus 488 AMH antibody (CL488-23479) at dilution of 1:200.



Immunofluorescent analysis of (4% PFA) fixed mouse ovary tissue using CoraLite® Plus 488 AMH antibody (CL488-23479) at dilution of 1:200.