

For Research Use Only

CoraLite® Plus 488-conjugated ATP1A1 Polyclonal antibody



Catalog Number: CL488-14418

Featured Product

Basic Information

Catalog Number:

CL488-14418

Size:

1000 µg/ml

Source:

Rabbit

Isotype:

IgG

Immunogen Catalog Number:

AG5763

GenBank Accession Number:

BC050359

GeneID (NCBI):

476

ENSEMBL Gene ID:

ENSG00000163399

UNIPROT ID:

P05023

Full Name:

ATPase, Na⁺/K⁺ transporting, alpha 1 polypeptide

Calculated MW:

113 kDa

Observed MW:

100-110 kDa

Purification Method:

Antigen affinity purification

Recommended Dilutions:

IF 1:50-1:500

Excitation/Emission maxima wavelengths:

493 nm / 522 nm

Applications

Tested Applications:

IF/ICC

Species Specificity:

human, mouse, rat

For optimal WB detection with 14418-1-AP, we do not recommend boiling the sample after lysis.

Positive Controls:

IF : Caco-2 cells,

Background Information

ATP1A1 is the catalytic component of Na⁺/K⁺-ATPase which is a membrane bound enzyme primarily involved in generation of Na⁺ and K⁺ gradients across plasma membranes and in determination of cytoplasmic Na⁺ levels. ATP1A1 is a ubiquitously expressed membrane protein and often used as the marker or internal control for plasma membrane protein. For optimal WB detection of this membrane protein, we recommend to avoid boiling the sample after lysis.

Storage

Storage:

Store at -20°C. Avoid exposure to light. Stable for one year after shipment.

Storage Buffer:

PBS with 50% Glycerol, 0.05% Proclin300, 0.5% BSA, pH 7.3.

Aliquoting is unnecessary for -20°C storage

For technical support and original validation data for this product please contact:

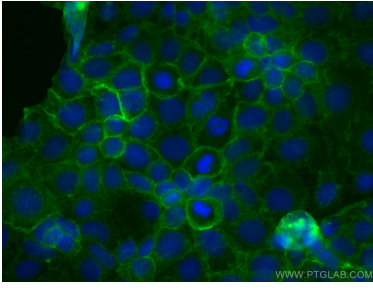
T: 4006900926

E: Proteintech-CN@ptglab.com

W: ptgcn.com

This product is exclusively available under Proteintech Group brand and is not available to purchase from any other manufacturer.

Selected Validation Data



Immunofluorescent analysis of (-20°C Ethanol) fixed Caco-2 cells using CoraLite® Plus 488 ATP1A1 antibody (CL488-14418) at dilution of 1:200.